

**Director**  
**Children's Services**  
**Martin Gray**

**Chief Adviser's Education**  
**Deborah Merrett (secondary)**  
**Lana Totty (primary)**

- **School Improvement**
- **Early Years Quality and Training**
- **Governor Support**
- **Workforce Development (Early Years and Schools)**
- **School Centred Initial Teacher Training**
- **Safeguarding in Schools**
- **Admissions and attendance**
- **Tees Valley Music Service**

**Service Manager SEN**  
**Joanne Mills**

- **Special Educational Needs (SEN) – 0-25**
- **Local Offer**
- **Early Support Nursery**
- **Educational Psychology**
- **Portage Service**
- **Case Solution Planning**
- **Early Intervention Team**

**Virtual School Heads**  
**Linda Russell-Bond**  
**Janet Wilson**

**Assistant Director  
Children's Social Care  
Rhona Bollands**

- Vulnerable, Exploited, Missing & Trafficked Lead (VEMT)
- Agency Decision Maker (ADM)
- Spark of Genius Social Care Lead

**Service Manager  
Looked After Children  
Resources  
Jo Lee**

**Service Manager  
Looked After Children  
and Complex Needs  
Jackie Ward**

**Service Manager  
Fieldwork Teams  
Mel Douglas**

**Service Manager  
S Work Lead  
Maria Murrell**

**VEMT  
Coordinator  
Melanie Cadman**

**Team Manager  
Resources  
Louise Carling**

**Team Manager  
Child Placement  
Judith Henderson**

**Deputy Team  
Manager  
Resources  
Angela Askins**

**Edge of Care (Our  
Place) Manager  
Dawn Coyle**

**Short Breaks (OASIS)  
Manager  
Susan Scott**

**Short Breaks  
Coordinator  
Frances Selby**

**Hartburn Lodge  
Manager  
Carol Devine**

**4 x LA Children's  
Homes  
Accommodation  
Officer  
Jonathan Fawcett**

**Deputy Team  
Manager  
Child Placement  
Alison Myers**  
  
**Fostering and  
Supported  
Lodgings Service**

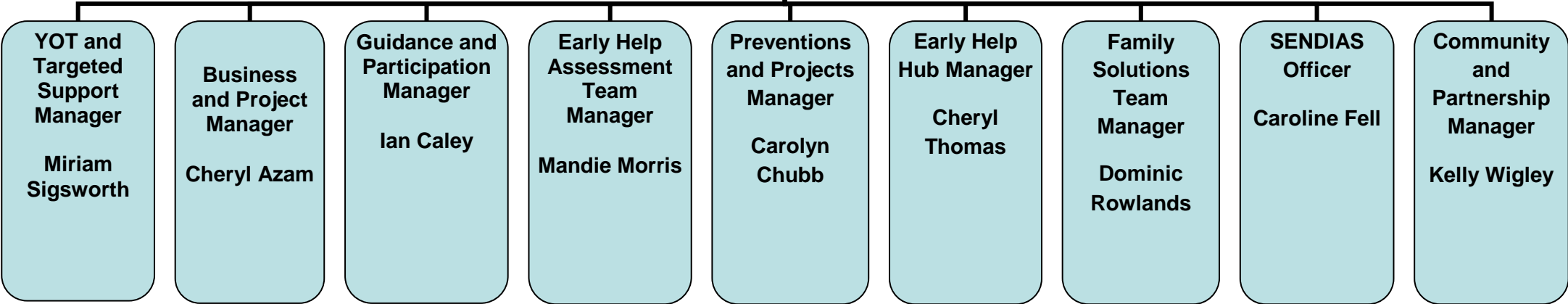
2 x Permanence Teams  
Permanence 1 Manager  
Lisa Elliott  
Permanence 2 Manager  
VACANCY  
1 x Leaving Care Team  
Leaving Care Team Manager  
Craig Piggott  
1 x Disabled Children Team  
Team Manager Disabled  
Children Team  
Patti Sanderson

6 x Fieldwork Teams  
North 1 Manager  
Lisa Pope  
(Dep. Grace Stebbing)  
North 2 Manager  
Louise Nixon  
(Dep. Joanne O'Neil)  
North 3 Manager  
Alanna Nixon  
(Dep. Lisa Massey)  
South 1 Manager  
Yvonne Priestley  
(Dep. Jane Kearney)  
South 2 Manager  
Clive Potts  
(Dep. Hannah Ditchburn)  
South 3 Manager  
Jennie Nugent  
(Dep. VACANT)  
Data Analyst  
Karen Taylor

**Assistant Service Manager  
Jon Doyle**

2 x Assessment Team  
Assessment Team  
(North and South)  
Manager  
Debbie Farrow  
Assessment Team North  
(Dep. Alison Cameron)  
Assessment Team  
South  
(Dep. Jacqui Allen)  
1 x FGC Coordinator  
Debbie Peel  
1 x Policy & Procedures  
Development  
Coordinator  
Rachel Cooke

**EARLY HELP  
Manager**  
**David Willingham**



**Service Manager**  
**Quality, Practice and**  
**Review**  
**Kim Staff**

**Emergency Duty Team**  
**Graham Lyons**

**Independent Review Unit**  
**Julie Aylesbury**

**Workforce Development**  
**Maureen McEnaney**

**Service Manager**  
**Adoption Tees Valley**  
**Vicky Davidson-Boyd**

**Team Manager**  
**Louise Addison**

**Team Manager**  
**Lynne Cardwell**