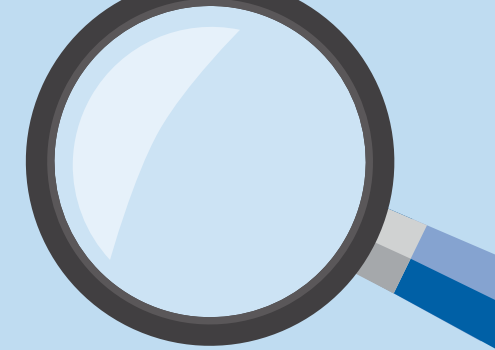


Stockton-on-Tees Borough Council Scrutiny Challenge for a better Borough 2020-21

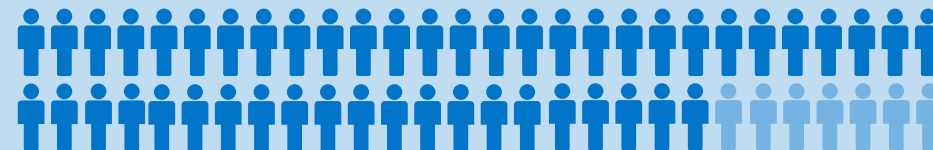


What is overview and scrutiny?

Scrutiny helps to ensure that local people receive high quality services through the Council's Scrutiny Committees checking that the services and policies meet the needs of local people. It involves Councillors working with local people, the community, Council services and other organisations.

Checks and Balances

The Council's Cabinet make decisions and decide on priorities, and the Scrutiny Committees ensure that they are held to account for delivering them and that any public concerns are represented.



We have **56** Councillors **7** are on Cabinet and the remaining **49** can take part in overview and scrutiny

5 Select Committees



Adult Social Care and Health



Children and Young People



Crime and Disorder



People



Place

Executive Scrutiny Committee

- Co-ordinates the overall scrutiny work programme
- Oversight of Council Plan and Medium Term Financial Plan (MTFP)
- Considered the Council's response to and recovery from COVID-19

Focus on Health

- Performance and quality of local hospital Trusts
- Regional health service changes and reconfiguration of acute services
- Monitoring of CQC care home ratings
- Overview of Adult and Public Health Services

What they do • Service Reviews • Performance Reviews • Frontline Service Visits • Emerging Trends and Issues • Scrutinise External Organisations

7 Scrutiny Reviews

- **Hospital Discharge (Phase 1):** examined the impact of the 2020 COVID-19 pandemic on hospital discharge to local care homes, with a focus on the national guidance, the process around discharge to care homes, and any potential learning ahead of an anticipated second COVID-19 surge.
<http://www.egenda.stockton.gov.uk/aksstockton/images/att39360.pdf>
- **Cost of School Uniforms:** investigated whether school uniform policies in Stockton-on-Tees were accessible and affordable, and examined the support available for families struggling to meet uniform costs.
<http://www.egenda.stockton.gov.uk/aksstockton/images/att39602.pdf>
- **Fly-Grazed Horses:** probed the Council's and other relevant organisations' roles and responsibilities for fly-grazed horses on both Council and non-Council land, and identified the extent of concerns across the Borough regarding this practice in order to inform the creation of a formal fly-grazed horses policy.
<http://www.egenda.stockton.gov.uk/aksstockton/images/att39790.pdf>
- **Local Council Tax Support Scheme:** explored the revision of the Local Council Tax Support Scheme and considered the risks of forecasting, developing and consulting on changes during the COVID-19 pandemic.
<http://www.egenda.stockton.gov.uk/aksstockton/images/att39593.pdf>
- **Public Consultation:** evaluated, with a view to improving, the performance of the consultation activity itself and of all Council activities that use the results of the consultations.
<http://www.egenda.stockton.gov.uk/aksstockton/images/att39595.pdf>
- **Business Support and Engagement:** assessed the Council's overall business support / engagement role, how this was utilised and viewed externally, and whether the necessary resources were in place to satisfy existing and future demand.
<http://www.egenda.stockton.gov.uk/aksstockton/images/att39604.pdf>
- **Planters in Residential Streets (Task & Finish):** investigated the options for retaining, maintaining or removing planters in residential streets, and whether planters could be given a new lease of life by seeking third-party or community involvement.
<http://www.egenda.stockton.gov.uk/aksstockton/images/att39786.pdf>
- Several other reviews began during 2020-21 and will be completed in 2021-22 – these involve **Hospital Discharge (Phase 2 – discharge to an individual's own home), Care Leavers EET, Fraud Awareness (Personal), Carbon Monoxide Awareness and Burial Provision.**

Focus on Police and Crime

We support the Cleveland Police and Crime Panel:

- Scrutinise the Police and Crime Commissioner
- Review the Police precept
- Comment on the Police and Crime Plan
- Carry out investigations