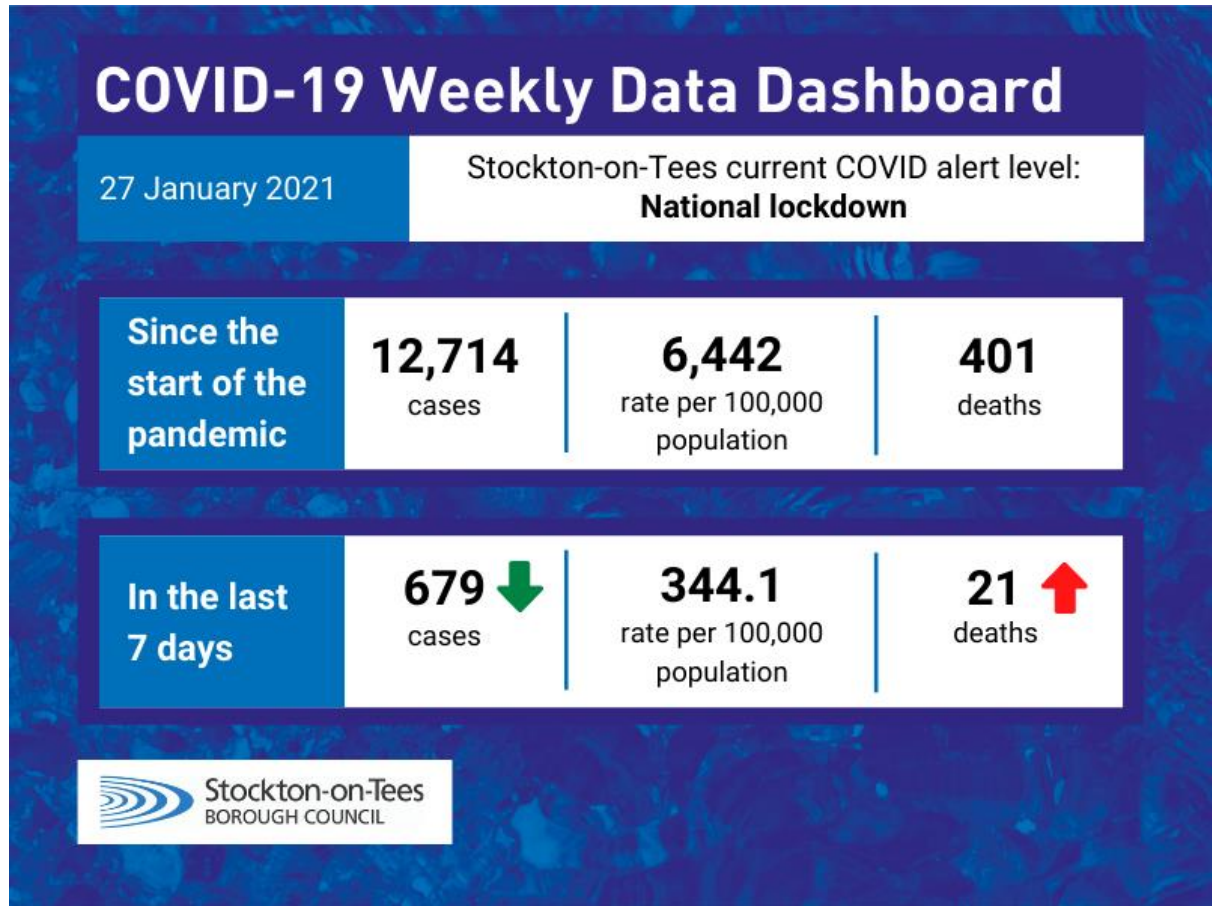


COVID-19 Dashboard – Stockton-on-Tees

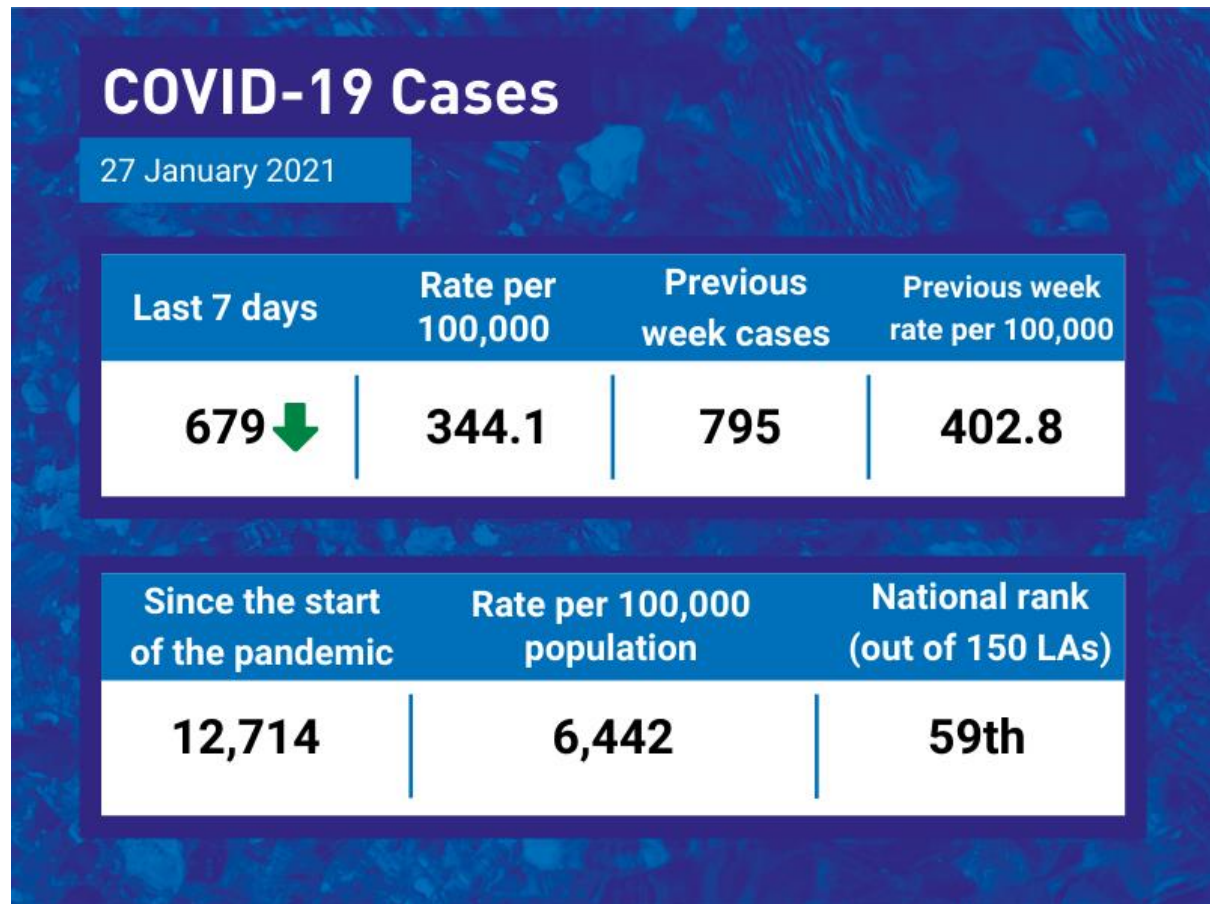
Wednesday 27 January 2021



*The current COVID alert level for Stockton-on-Tees is “National lockdown”.

Please [Click Here](#) for information about national lockdown rules and restrictions from 4 January 2021.

COVID-19 Cases



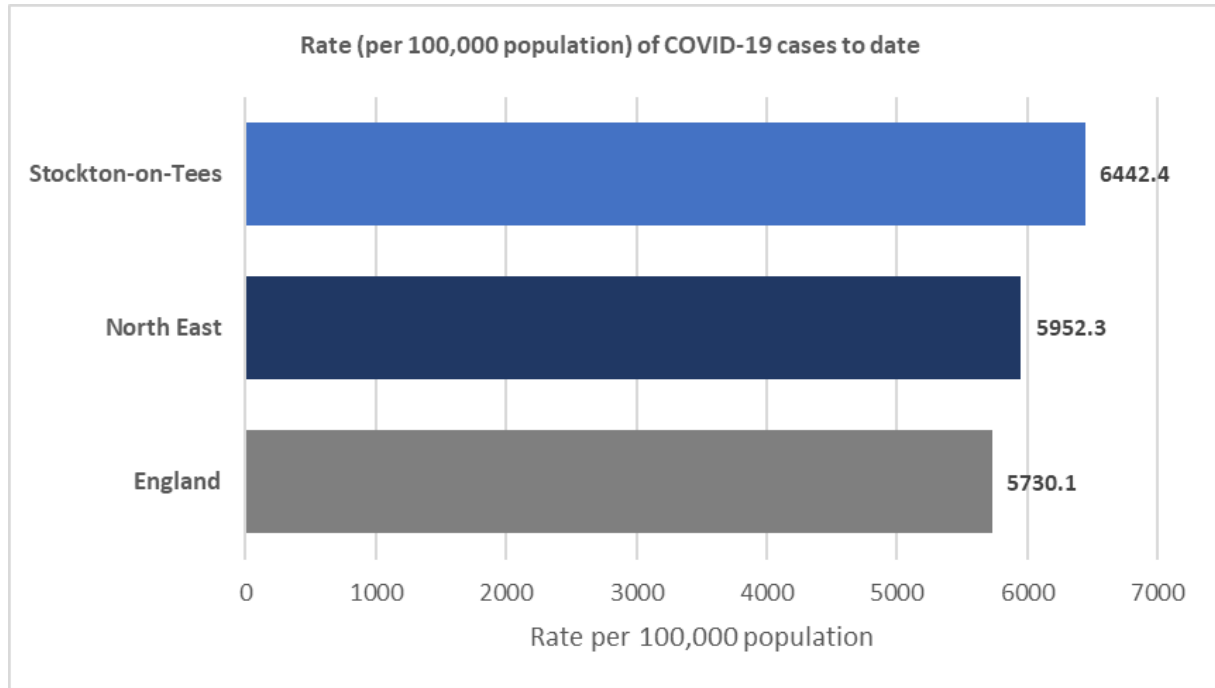
There were 679 cases of COVID-19 in Stockton-on-Tees in the last seven days, this is lower than the previous week, which saw 795 positive cases.

[Click here](#) for the coronavirus (COVID-19) interactive map, which shows COVID-19 cases by Middle Super Output Area (MSOA).

Since the start of the pandemic, there have been 12,714 cases of COVID-19 in Stockton-on-Tees.

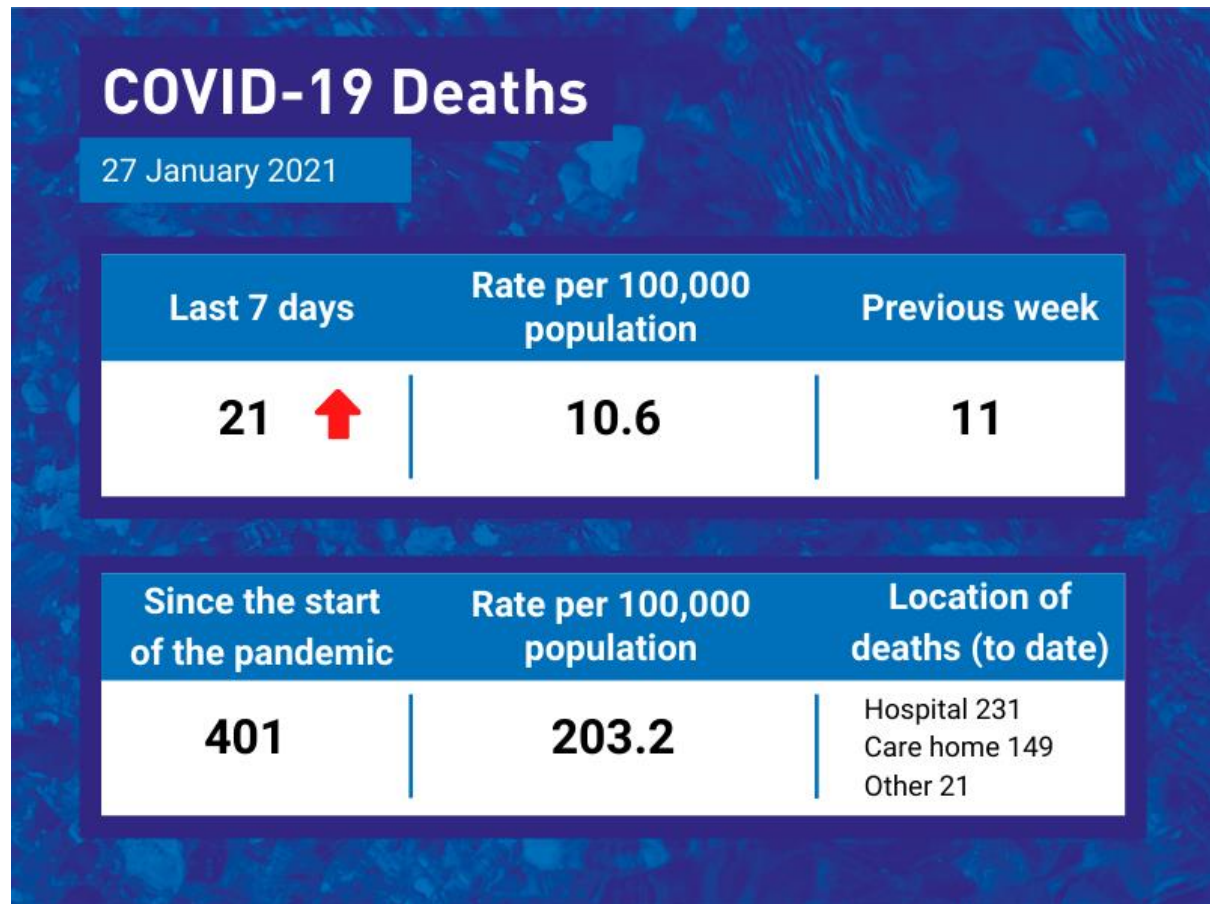
The rate of COVID-19 cases in Stockton-on-Tees (6,442 per 100,000 population) is ranked 59th highest (out of 150 UTLAs) in England.

The rate of COVID-19 cases in Stockton-on-Tees (to date) is higher than the North East and England averages.



Please note – The number of cases in the “Previous week” may be different to last week, as cases are often retrospectively added to the Government COVID-19 dashboard.

COVID-19 Deaths



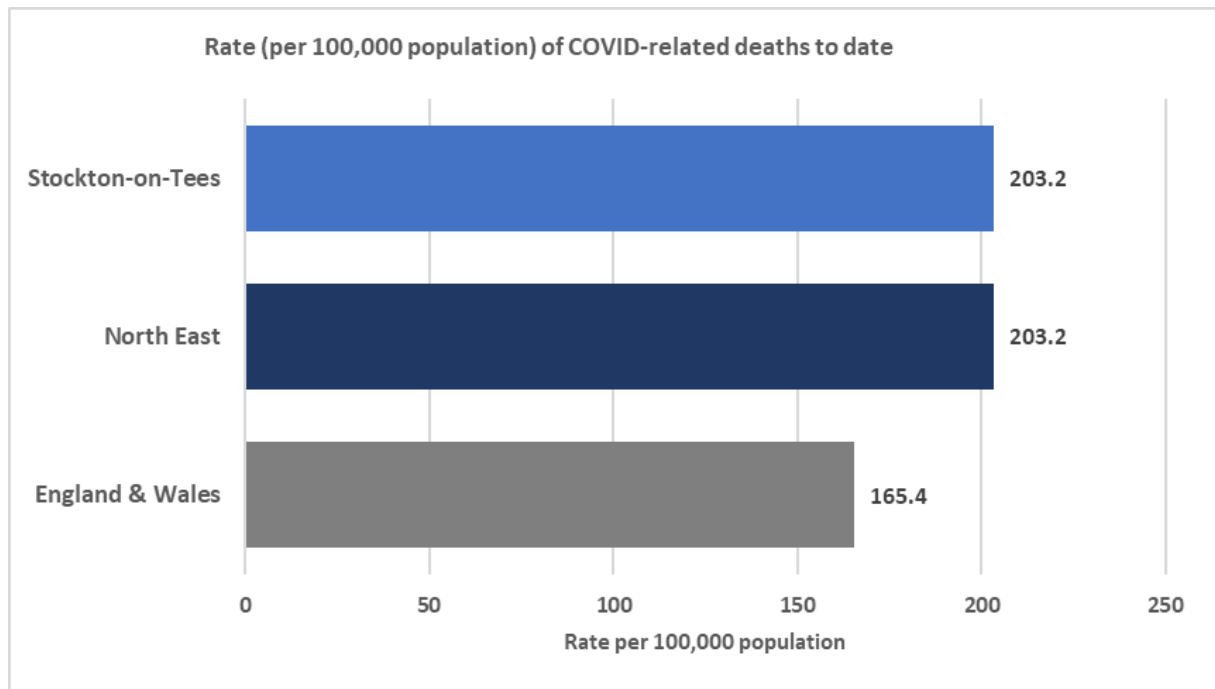
There were 21 COVID-19 related death in Stockton-on-Tees in the last seven days, this is higher than the previous week which saw 11 COVID-19 related deaths.

[Click here](#) for mortality rates involving the coronavirus (COVID-19) in Stockton-on-Tees by Middle Super Output Area (MSOA).

Since the start of the pandemic, there have been 401* COVID-19 related deaths in Stockton-on-Tees.

The rate of COVID-19 related deaths in Stockton-on-Tees (203.2 per 100,000 population) is ranked 84th highest (out of 336 LTLAs) in England & Wales.

The rate of COVID-19 related deaths in Stockton-on-Tees (to date) is the same as the North East average, but higher than the England & Wales average.



**The number of COVID-related deaths in Stockton-on-Tees are provided by the Office for National Statistics (ONS). The ONS method of counting COVID-19 related deaths are “deaths that have been registered where COVID-19 is mentioned anywhere on the death certificate”.*

Data Sources:

COVID-19 Cases Government (Weekly data range: Mon 18 January – Sun 24 January 2021). Published Wed 27 Jan as it can 3-4 days for the numbers to be applied and stabilise from Government data sources.

COVID-19 Deaths ONS (Data release Wed 26 January 2021)