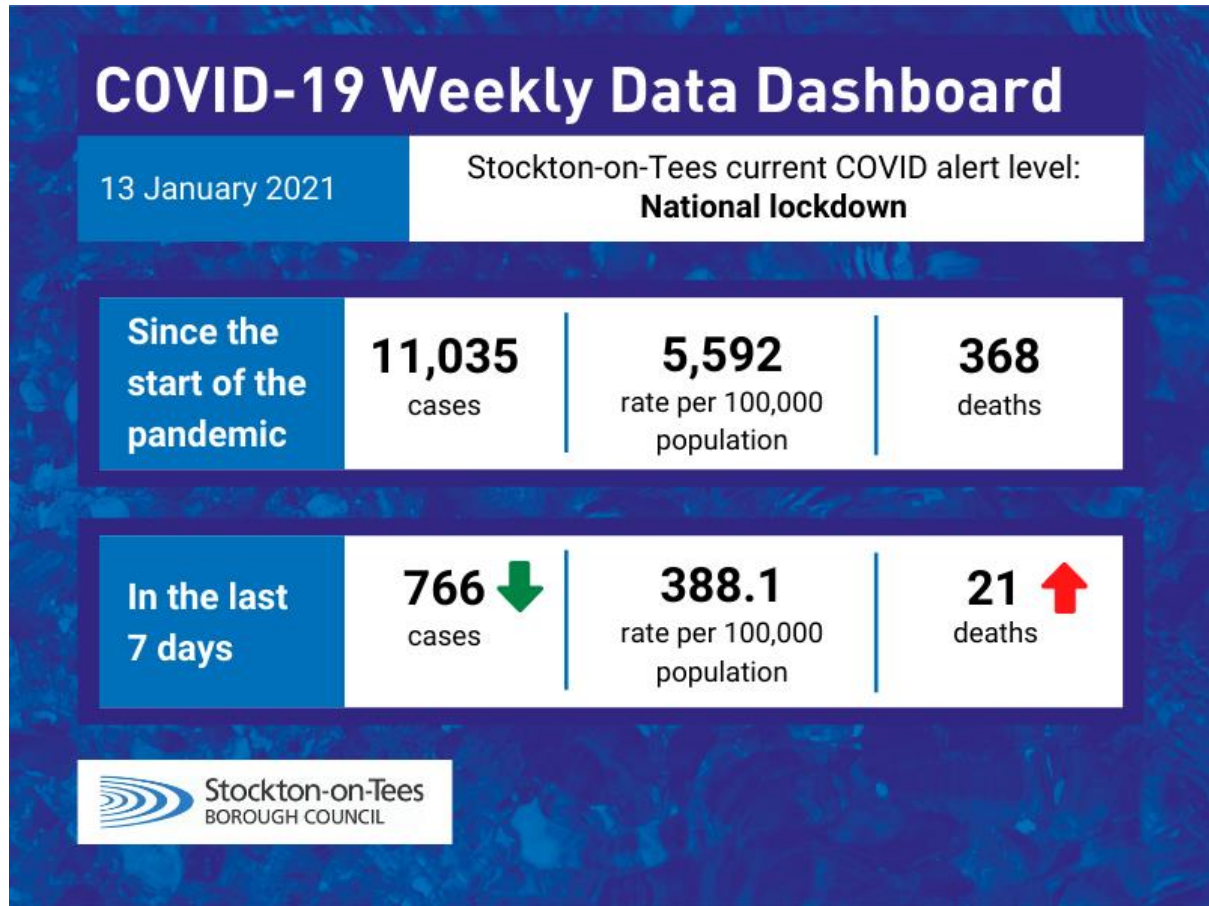


COVID-19 Dashboard – Stockton-on-Tees

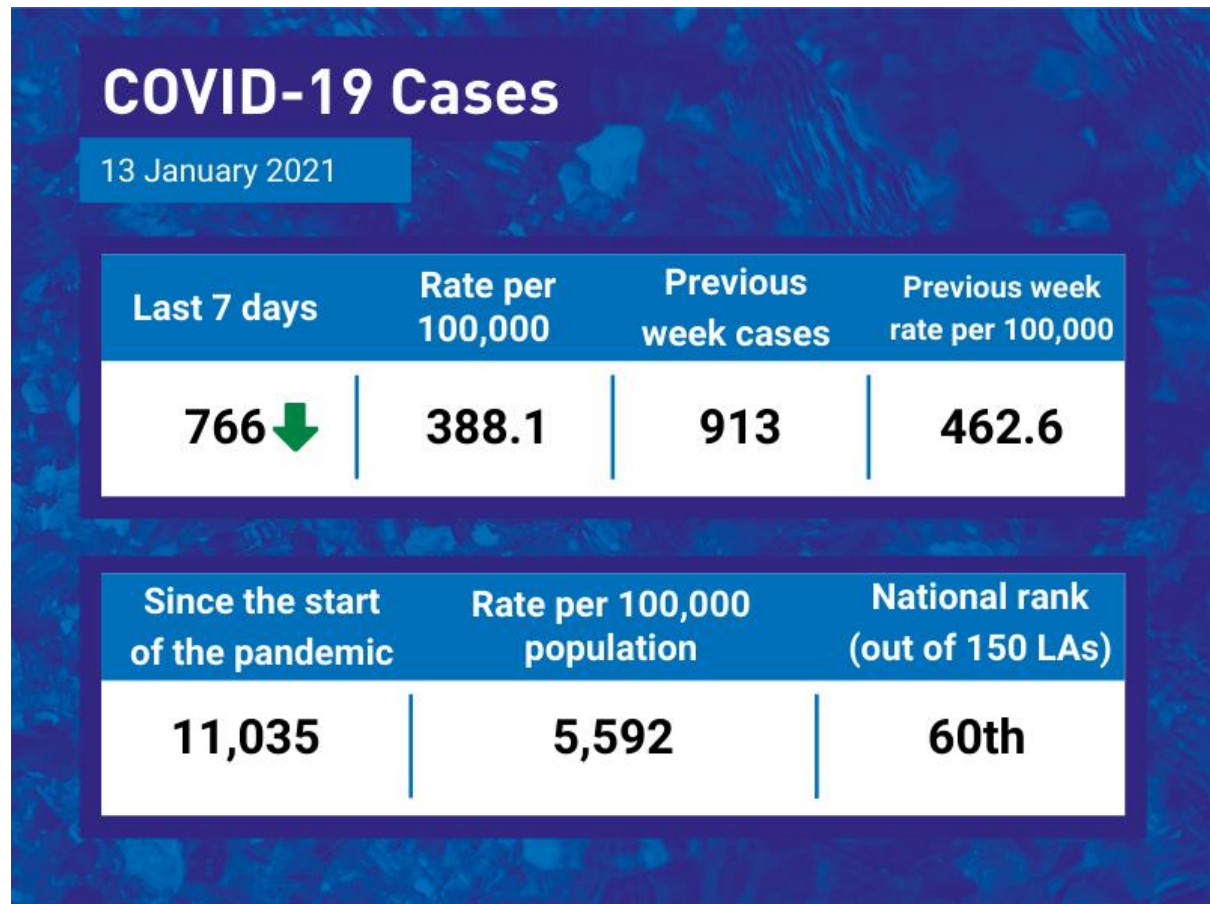
Wednesday 13 January 2021



The current COVID alert level for Stockton-on-Tees is “National lockdown”.

Please [Click Here](#) for information about national lockdown rules and restrictions from 4th January 2021.

COVID-19 Cases

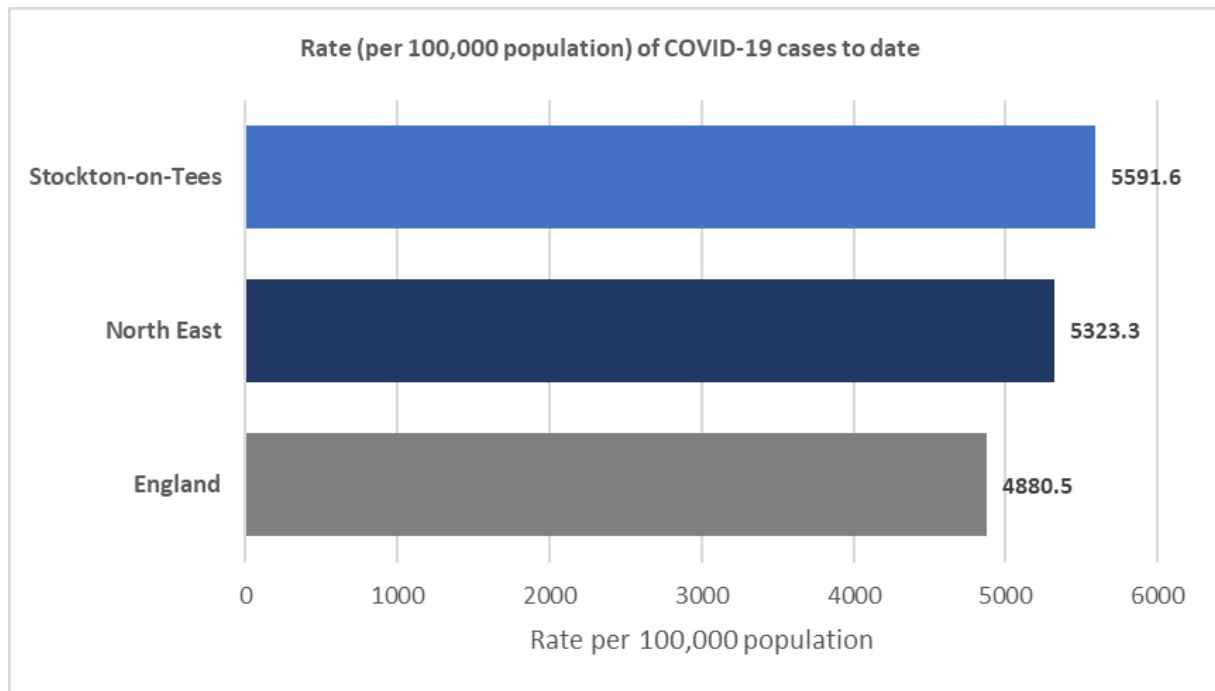


There were 766 cases of COVID-19 in Stockton-on-Tees in the last seven days, this is lower than the previous week, which saw 913 positive cases.

Since the start of the pandemic, there have been 11,035 cases of COVID-19 in Stockton-on-Tees.

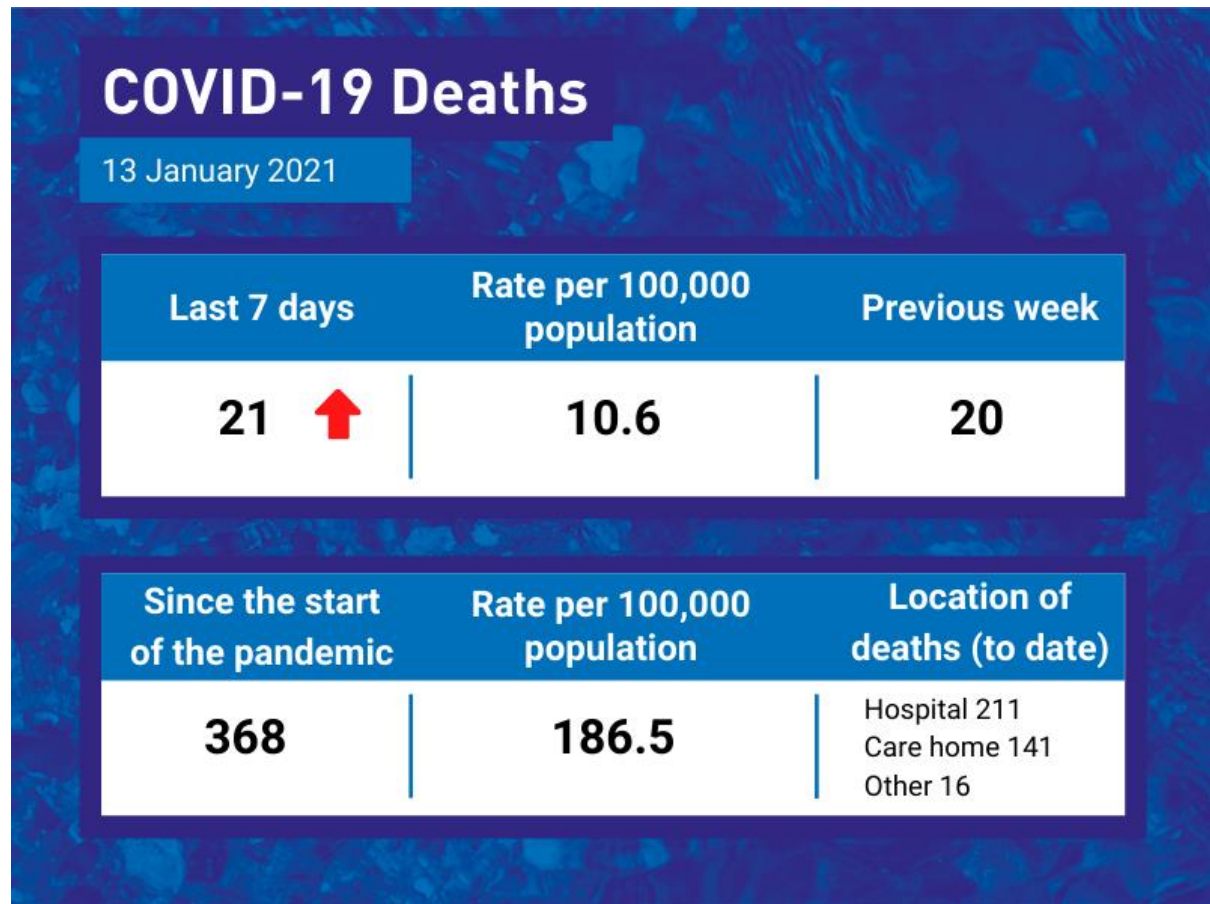
The rate of COVID-19 cases in Stockton-on-Tees (5,592 per 100,000 population) is ranked 60th highest (out of 150 UTLAs) in England.

The rate of COVID-19 cases in Stockton-on-Tees (to date) is higher than the North East and England averages.



Please note – The number of cases in the “Previous week” may be different to last week, as cases are often retrospectively added to the Government COVID-19 dashboard.

COVID-19 Deaths



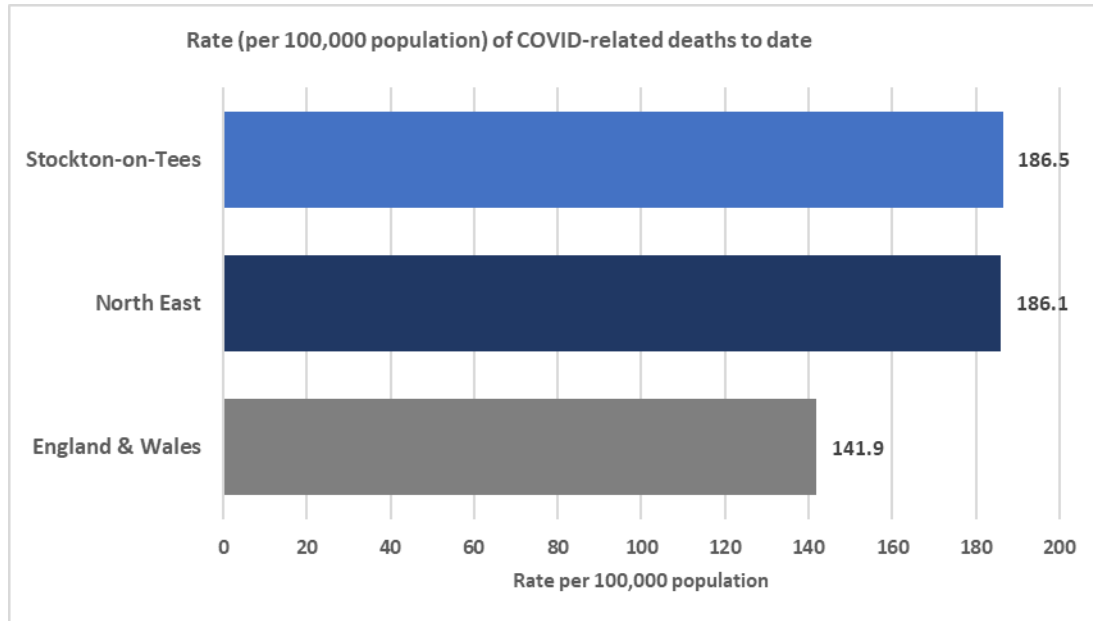
There were 21 COVID-19 related death in Stockton-on-Tees in the last seven days, this is higher than the previous week which saw 20 COVID-19 related deaths.

[Click here](#) for mortality rates involving the coronavirus (COVID-19) in Stockton-on-Tees by Middle Super Output Area (MSOA).

Since the start of the pandemic, there have been 368* COVID-19 related deaths in Stockton-on-Tees.

The rate of COVID-19 related deaths in Stockton-on-Tees (186.5 per 100,000 population) is ranked 60th highest (out of 336 LTLAs) in England & Wales.

The rate of COVID-19 related deaths in Stockton-on-Tees (to date) is higher than the North East and England & Wales averages.



**The number of COVID-related deaths in Stockton-on-Tees are provided by the Office for National Statistics (ONS). The ONS method of counting COVID-19 related deaths are “deaths that have been registered where COVID-19 is mentioned anywhere on the death certificate”.*

Data Sources:

COVID-19 Cases Government (Weekly data range: Mon 04 January – Sun 10 January 2021). Published Wed 13 Jan as it can 3-4 days for the numbers to be applied and stabilise from Government data sources.

COVID-19 Deaths ONS (Data release Wed 12 January 2021)