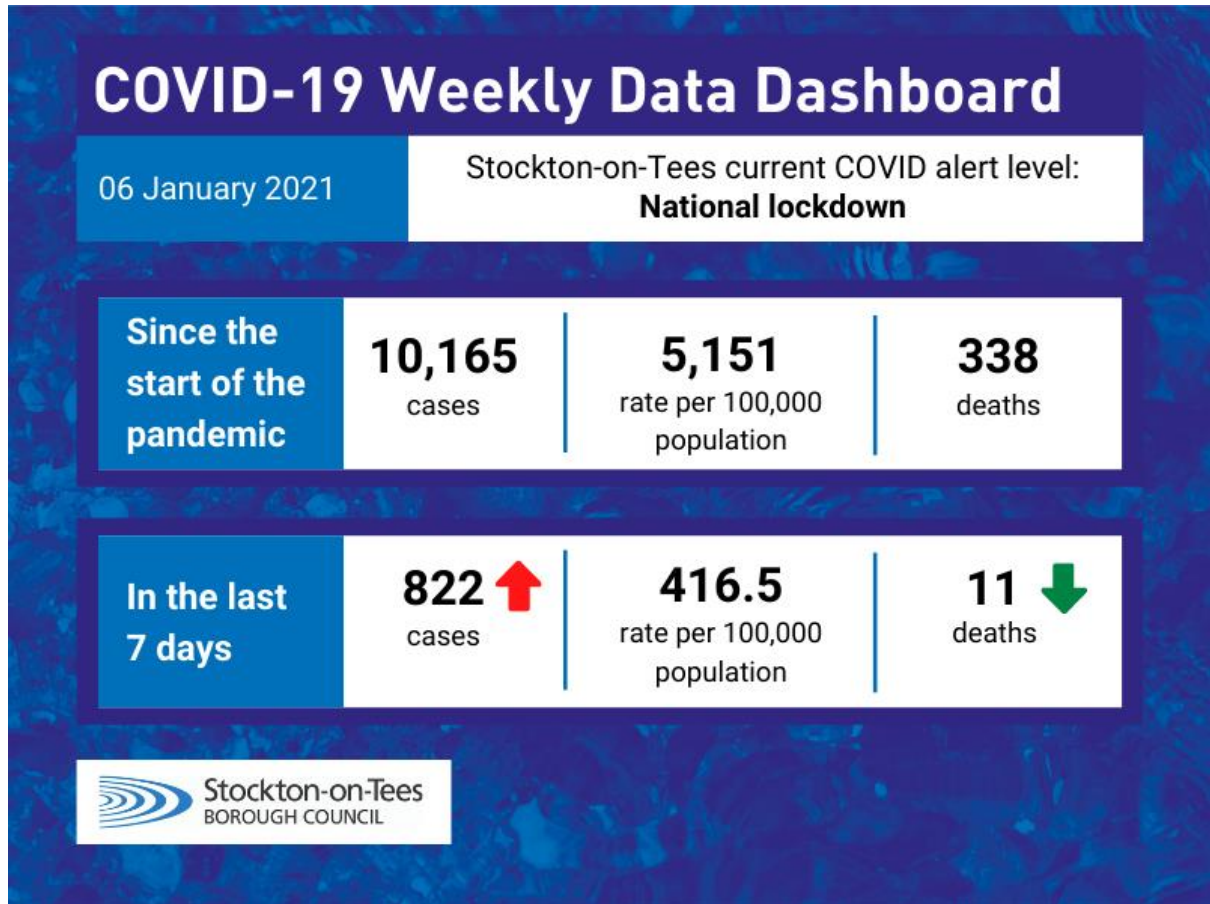


# COVID-19 Dashboard – Stockton-on-Tees

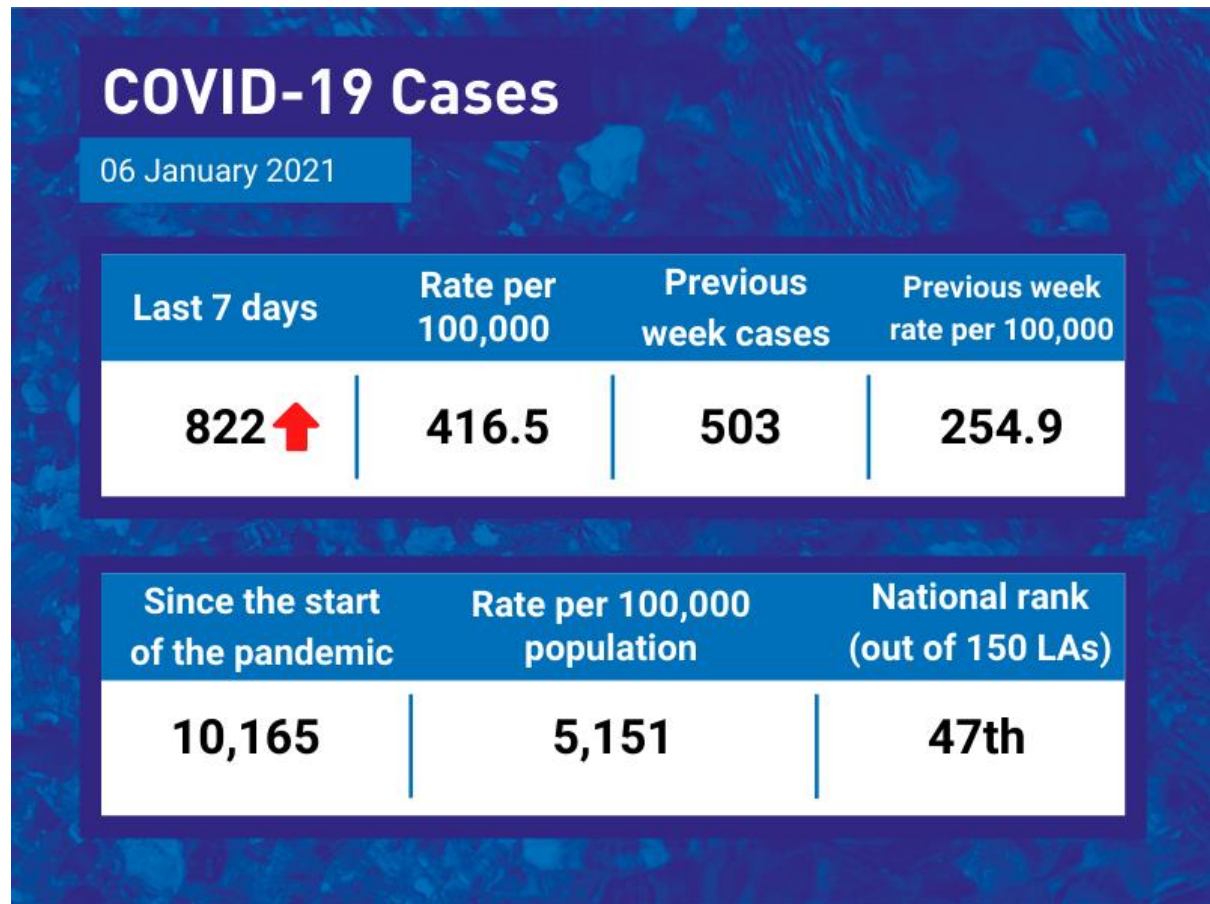
Wednesday 06 January 2021



\*The current COVID alert level for Stockton-on-Tees is “National lockdown”.

Please [Click Here](#) for information about national lockdown rules and restrictions from 4<sup>th</sup> January 2021.

## COVID-19 Cases

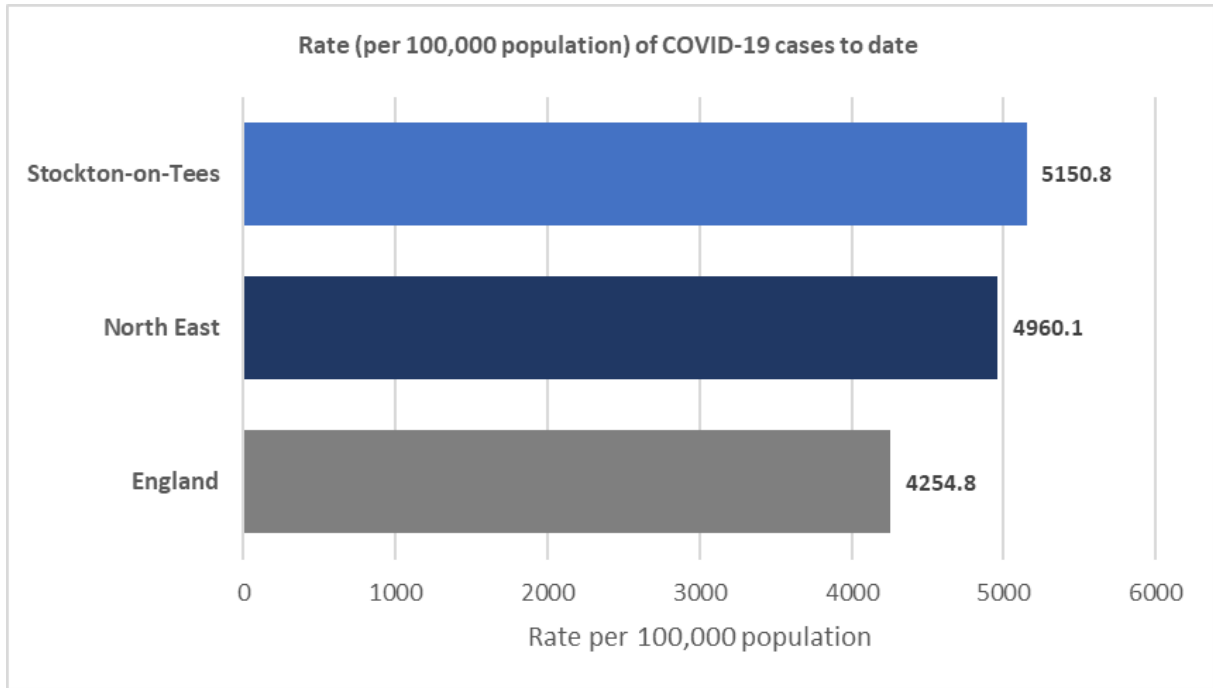


There were 822 cases of COVID-19 in Stockton-on-Tees in the last seven days, this is higher than the previous week, which saw 503 positive cases.

Since the start of the pandemic, there have been 10,165 cases of COVID-19 in Stockton-on-Tees.

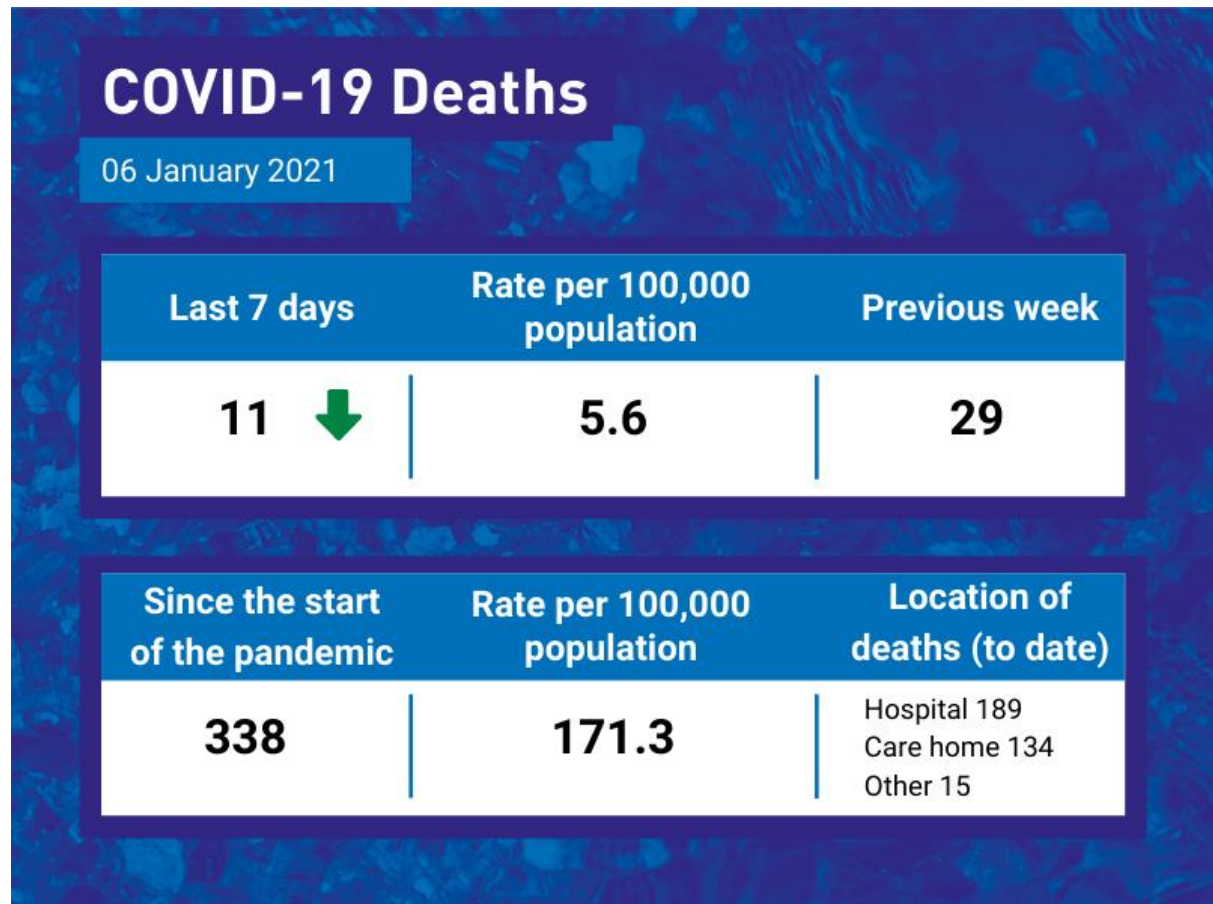
The rate of COVID-19 cases in Stockton-on-Tees (5,151 per 100,000 population) is ranked 47<sup>th</sup> highest (out of 150 UTLAs) in England.

The rate of COVID-19 cases in Stockton-on-Tees (to date) is higher than the North East and England averages.



*Please note – The number of cases in the “Previous week” may be different to last week, as cases are often retrospectively added to the Government COVID-19 dashboard.*

## COVID-19 Deaths



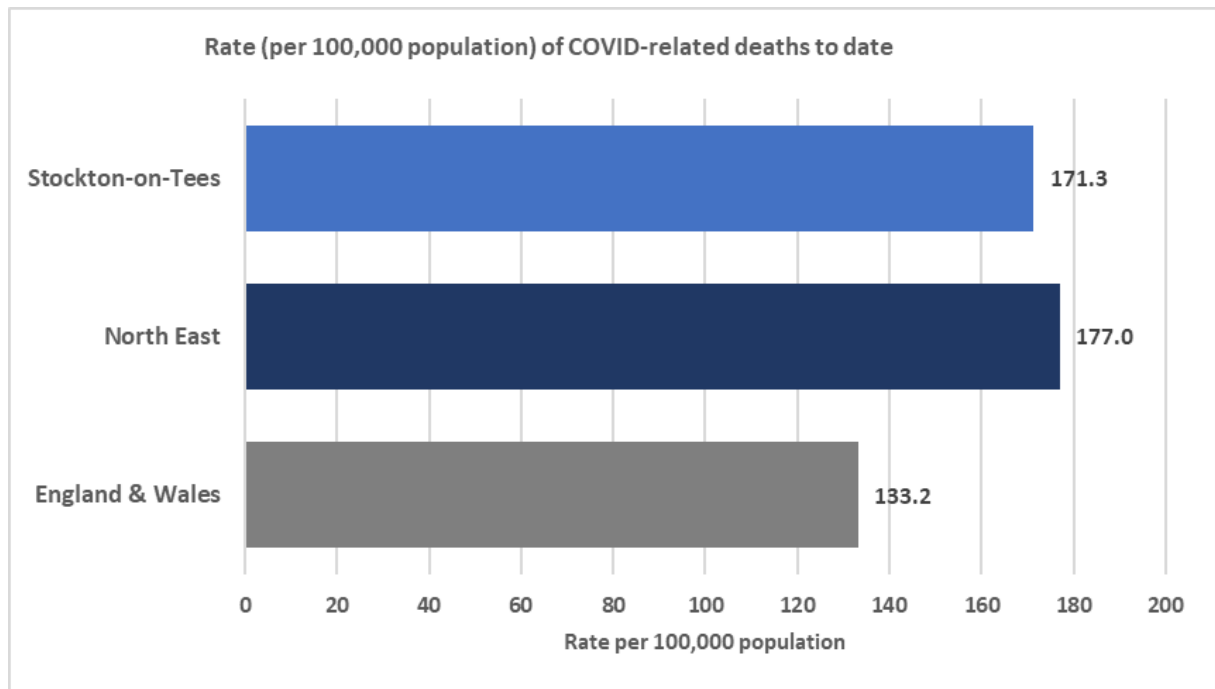
There were 11 COVID-19 related death in Stockton-on-Tees in the last seven days, this is lower than the previous week which saw 29 COVID-19 related deaths.

[Click here](#) for mortality rates involving the coronavirus (COVID-19) in Stockton-on-Tees by Middle Super Output Area (MSOA).

Since the start of the pandemic, there have been 338\* COVID-19 related deaths in Stockton-on-Tees.

The rate of COVID-19 related deaths in Stockton-on-Tees (171.3 per 100,000 population) is ranked 69<sup>th</sup> highest (out of 336 LTLAs) in England & Wales.

The rate of COVID-19 related deaths in Stockton-on-Tees (to date) is lower than the North East average, but higher than the England & Wales average.



*\*The number of COVID-related deaths in Stockton-on-Tees are provided by the Office for National Statistics (ONS). The ONS method of counting COVID-19 related deaths are “deaths that have been registered where COVID-19 is mentioned anywhere on the death certificate”.*

**Data Sources:**

COVID-19 Cases Government (Weekly data range: Mon 28 December – Sun 03 January 2021). Published Wed 06 Jan as it can 3-4 days for the numbers to be applied and stabilise from Government data sources.

COVID-19 Deaths ONS (Data release Wed 06 January 2021)