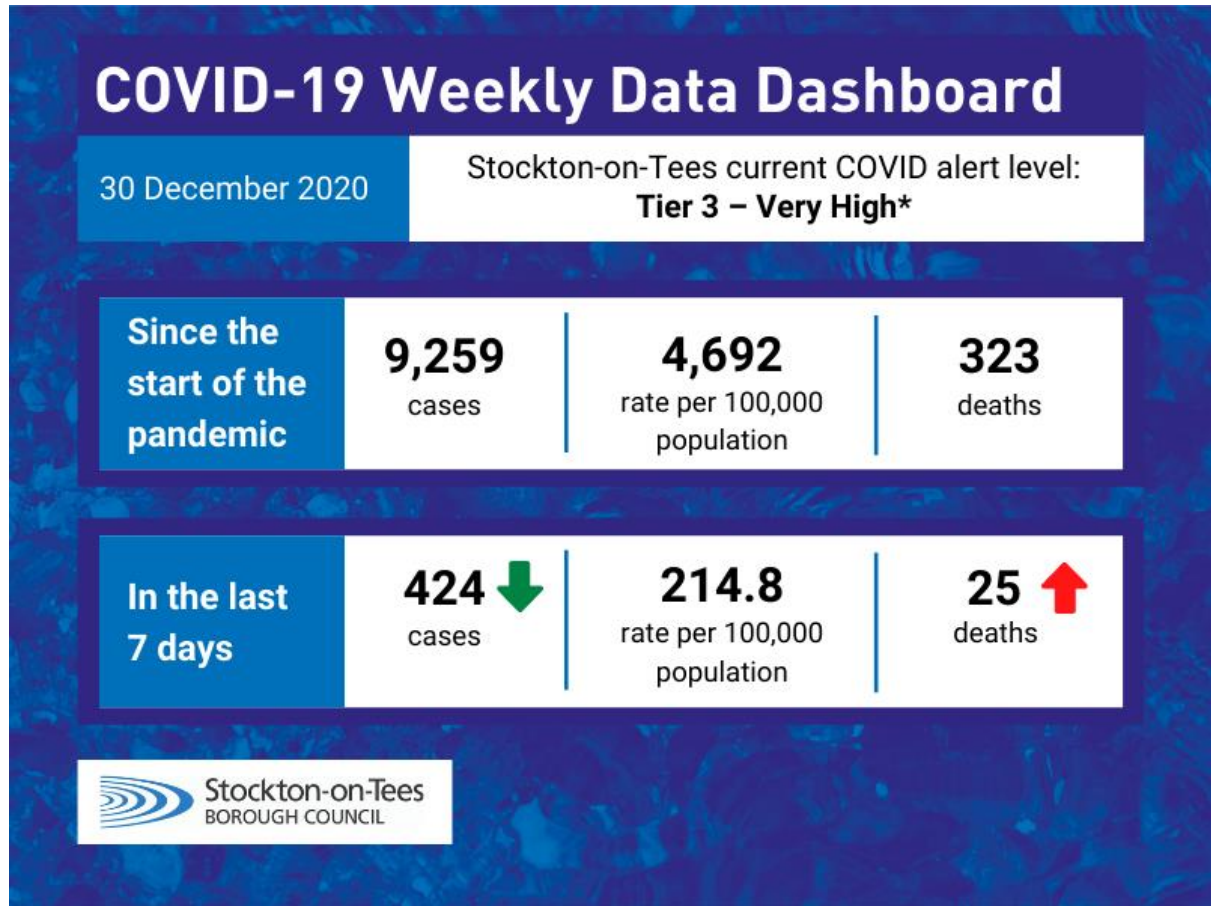


# COVID-19 Dashboard – Stockton-on-Tees

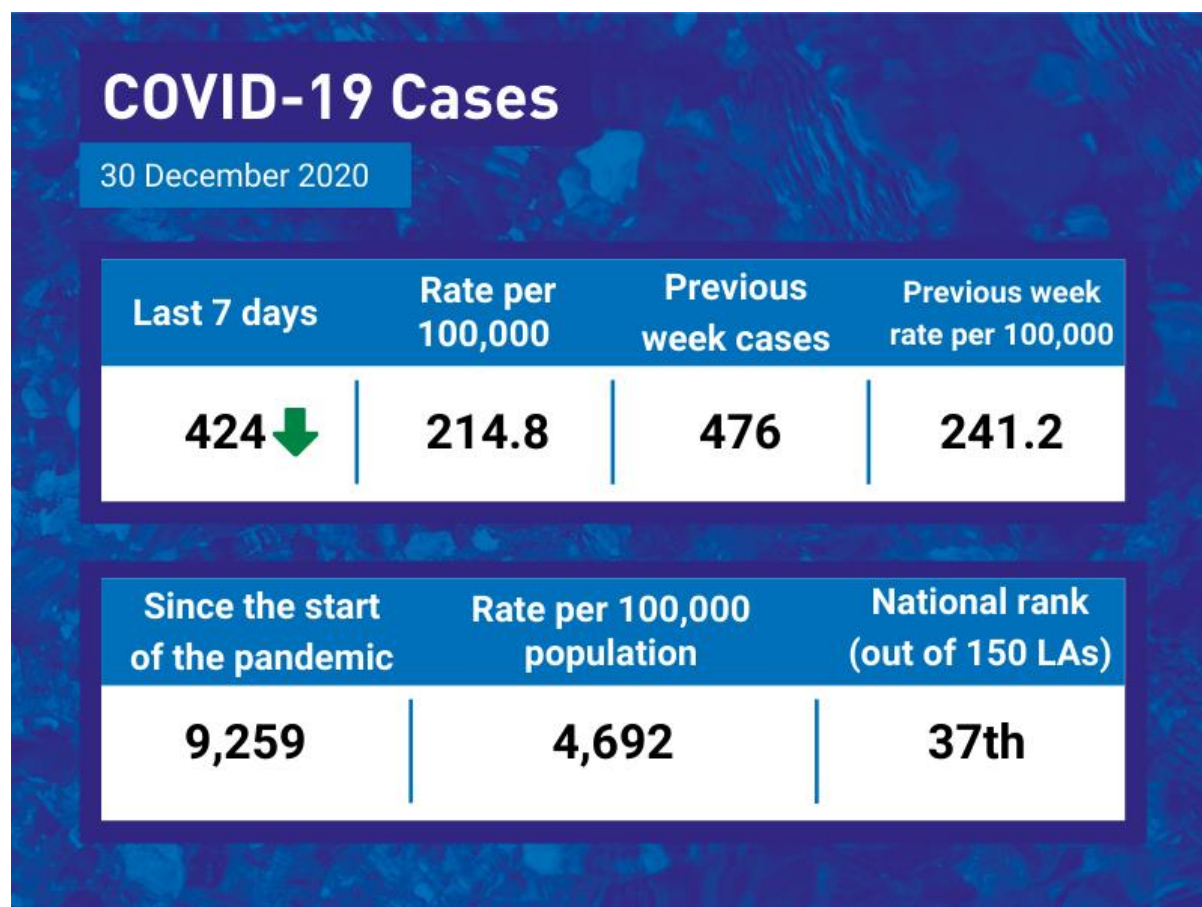
Wednesday 30 December 2020



\*The current COVID alert level for Stockton-on-Tees is “Tier 3 – Very High”.

Please [Click Here](#) for information about Tier 3 rules and restrictions from 2 December.

## COVID-19 Cases

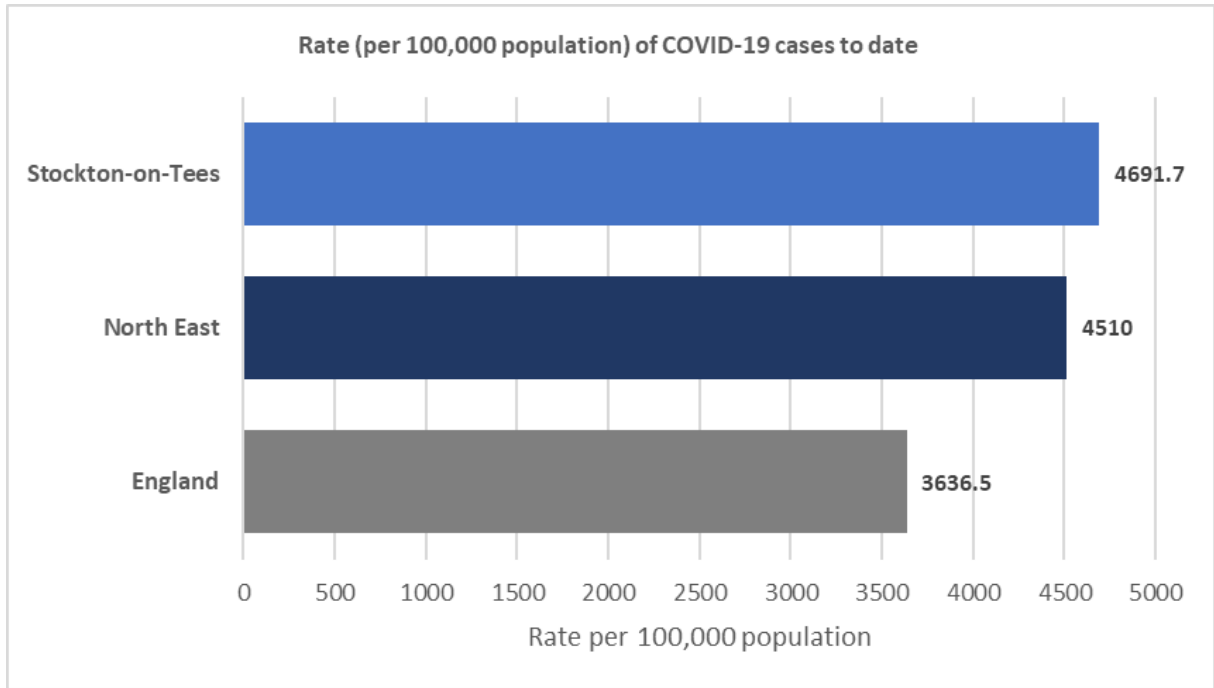


There were 424 cases of COVID-19 in Stockton-on-Tees in the last seven days, this is lower than the previous week, which saw 476 positive cases.

Since the start of the pandemic, there have been 9,259 cases of COVID-19 in Stockton-on-Tees.

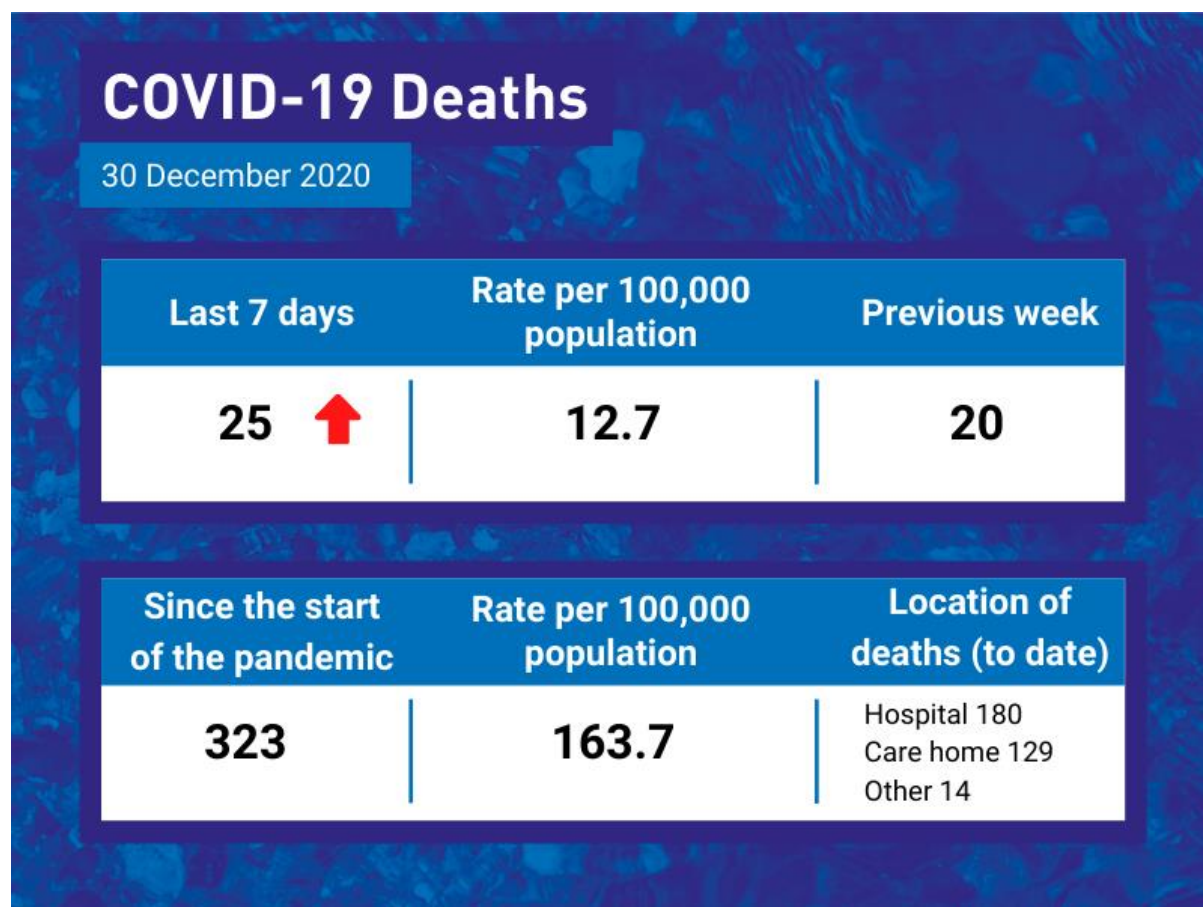
The rate of COVID-19 cases in Stockton-on-Tees (4,692 per 100,000 population) is ranked 37<sup>th</sup> highest (out of 150 UTLAs) in England.

The rate of COVID-19 cases in Stockton-on-Tees (to date) is higher than the North East and England averages.



*Please note – The number of cases in the “Previous week” may be different to last week, as cases are often retrospectively added to the Government COVID-19 dashboard.*

## COVID-19 Deaths



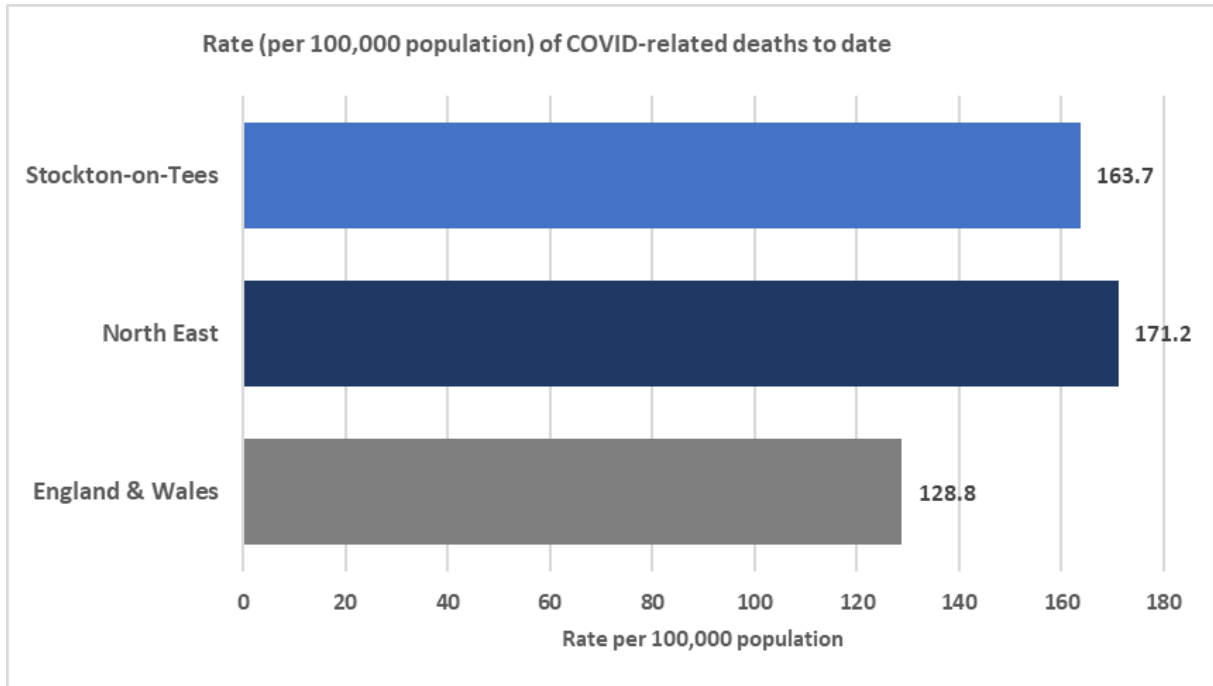
There were 25 COVID-19 related death in Stockton-on-Tees in the last seven days, this is higher than the previous week which saw 20 COVID-19 related deaths.

[Click here](#) for mortality rates involving the coronavirus (COVID-19) in Stockton-on-Tees by Middle Super Output Area (MSOA).

Since the start of the pandemic, there have been 323\* COVID-19 related deaths in Stockton-on-Tees.

The rate of COVID-19 related deaths in Stockton-on-Tees (163.7 per 100,000 population) is ranked 72<sup>nd</sup> highest (out of 336 LTLAs) in England & Wales.

The rate of COVID-19 related deaths in Stockton-on-Tees (to date) is lower than the North East average, but higher than the England & Wales average.



*\*The number of COVID-related deaths in Stockton-on-Tees are provided by the Office for National Statistics (ONS). The ONS method of counting COVID-19 related deaths are “deaths that have been registered where COVID-19 is mentioned anywhere on the death certificate”.*

**Data Sources:**

COVID-19 Cases Government (Weekly data range: Mon 21 December – Sun 27 December 2020). Published Wed 30 Dec as it can 3-4 days for the numbers to be applied and stabilise from Government data sources.

COVID-19 Deaths ONS (Data release Tues 29 December 2020)