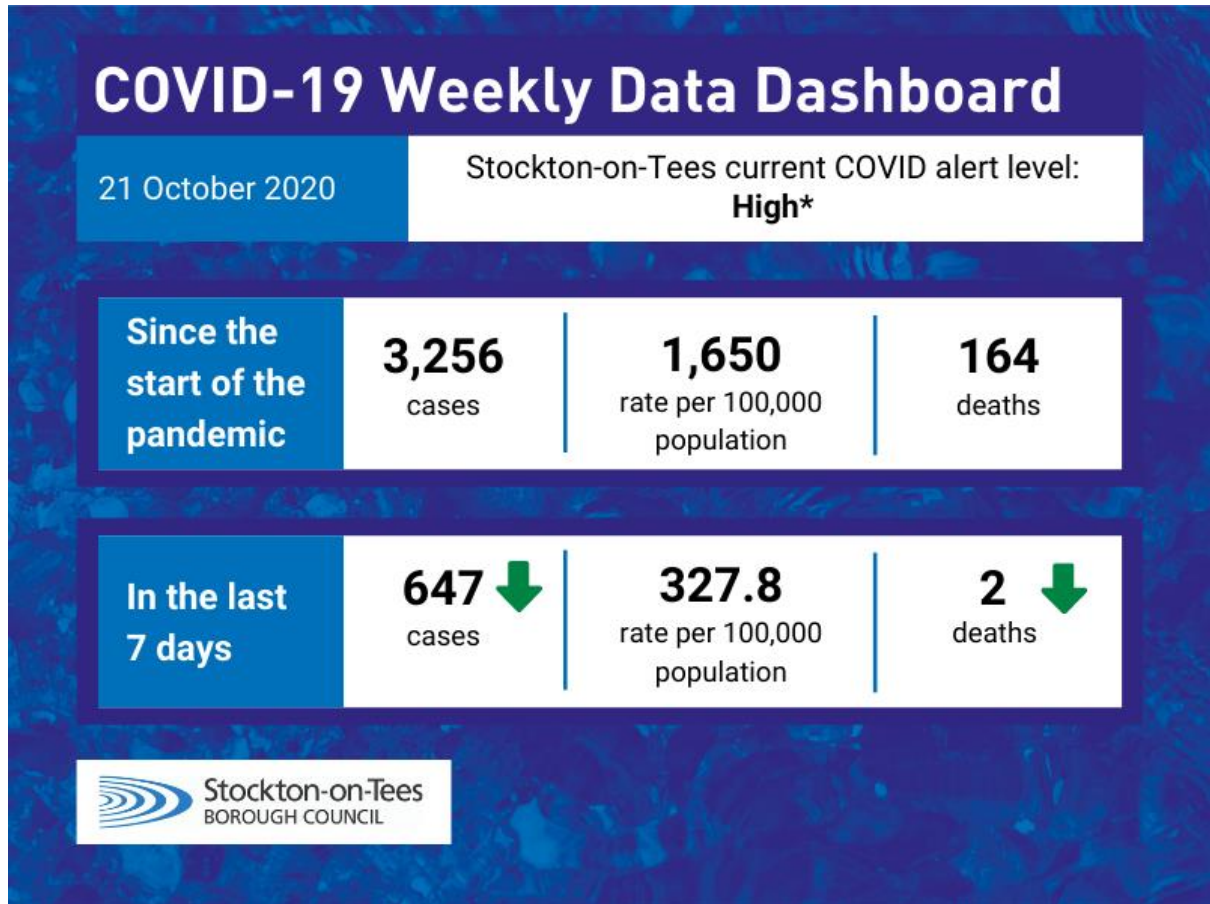


# COVID-19 Dashboard – Stockton-on-Tees

Wednesday 21 October 2020



\*The current COVID alert level for Stockton-on-Tees is “High”, this is defined as:

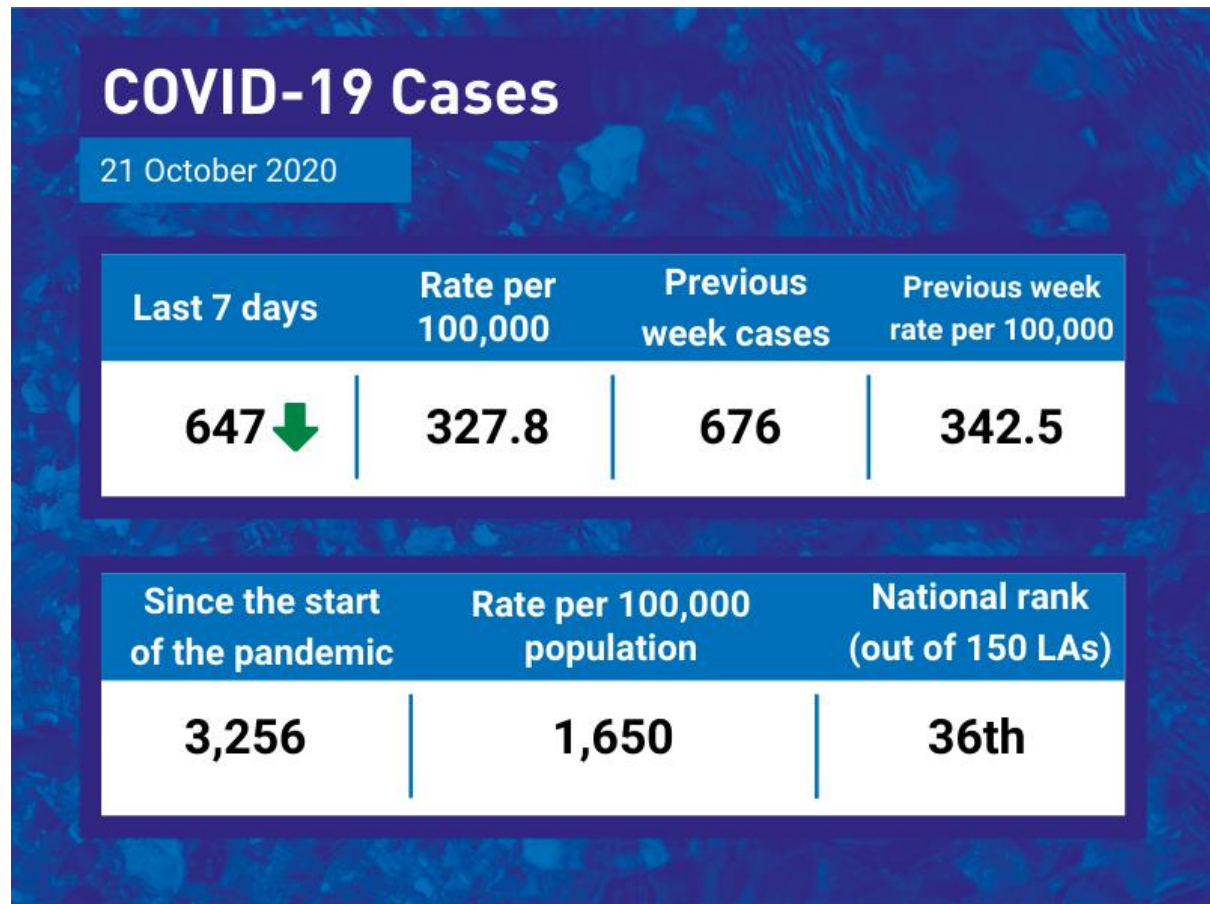
“Areas with a higher level of infections where some additional restrictions are in place.”

Please [Click Here](#) for the full list of local COVID alert levels by Local Authority area.

Please [Click Here](#) for further guidance on the different local COVID alert levels.

The national alert level remains at level 3.

## COVID-19 Cases

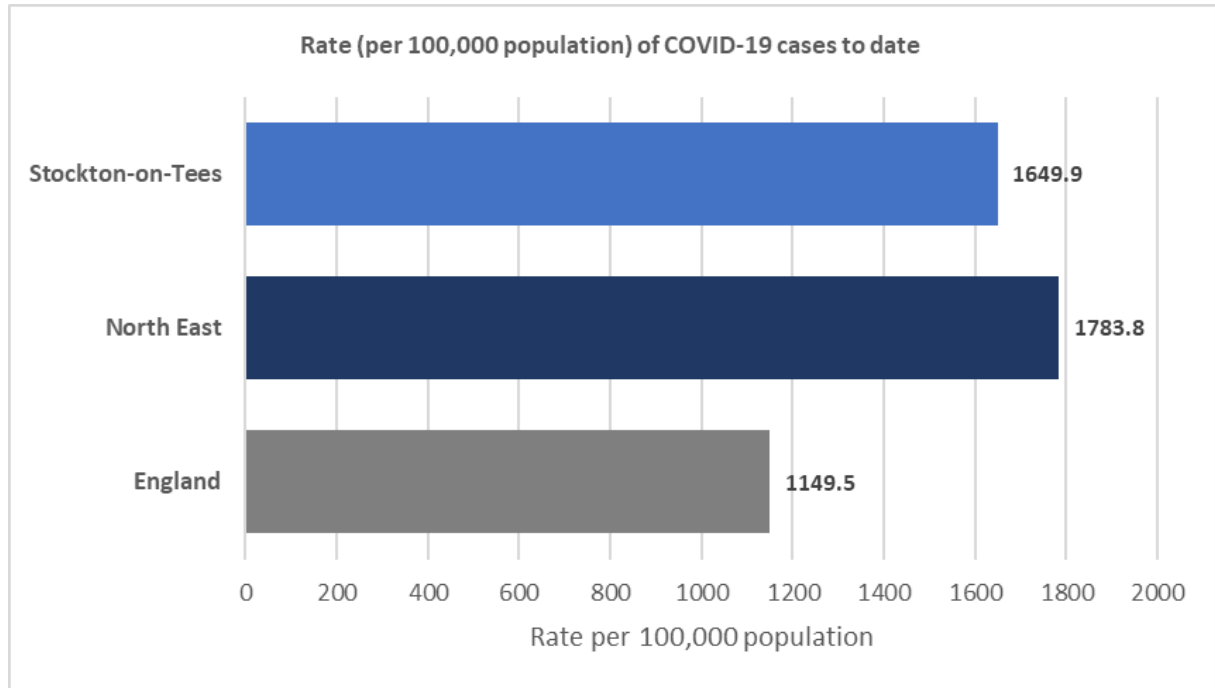


There were 647 cases of COVID-19 in Stockton-on-Tees in the last seven days, this is lower than the previous week, which saw 676 positive cases.

Since the start of the pandemic, there have been 3,256 cases of COVID-19 in Stockton-on-Tees.

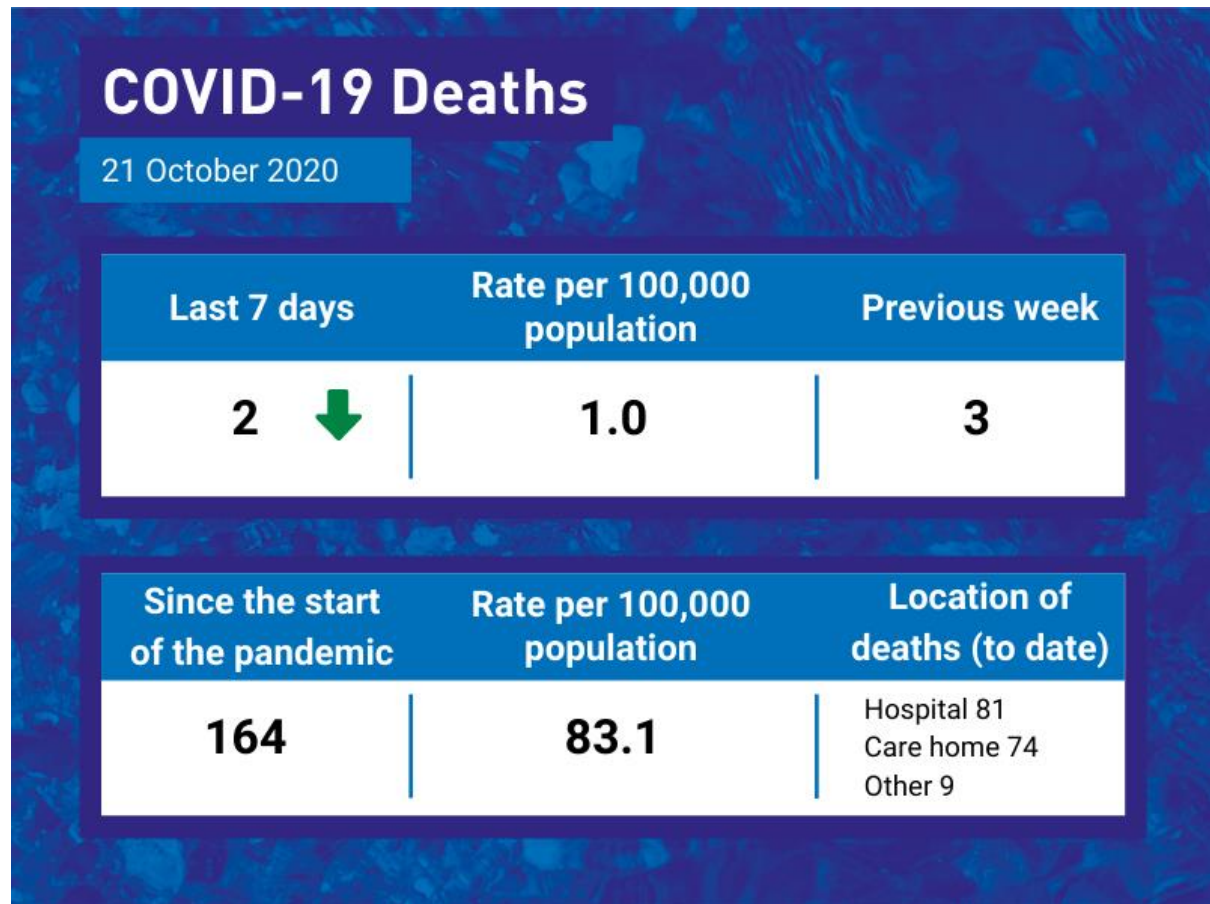
The rate of COVID-19 cases in Stockton-on-Tees (1,650 per 100,000 population) is ranked 36<sup>th</sup> highest (out of 150 UTLAs) in England.

The rate of COVID-19 cases in Stockton-on-Tees (to date) is lower than the North East average, but higher than the England average.



*Please note – The number of cases in the “Previous week” may be different to last week, as cases are often retrospectively added to the Government COVID-19 dashboard.*

## COVID-19 Deaths



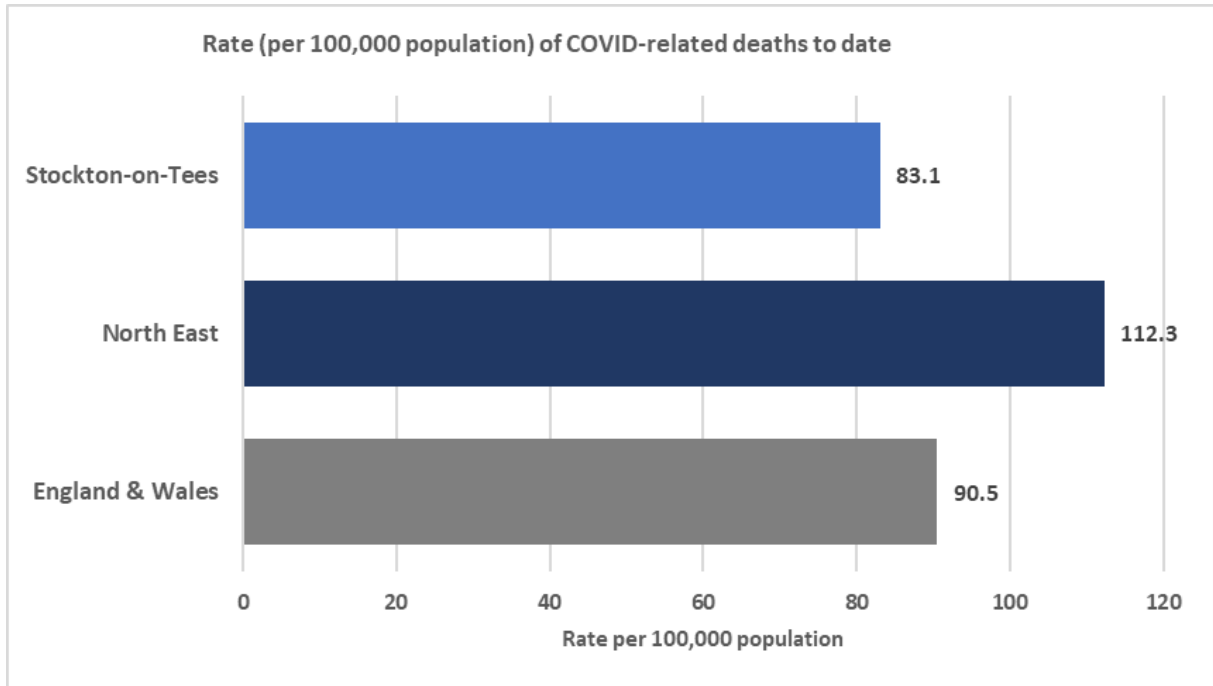
There were 2 COVID-19 related death in Stockton-on-Tees in the last seven days, this is lower than the previous week which saw 2 COVID-19 related deaths.

[Click here](#) for mortality rates involving the coronavirus (COVID-19) in Stockton-on-Tees by Middle Super Output Area (MSOA).

Since the start of the pandemic, there have been 164\* COVID-19 related deaths in Stockton-on-Tees.

The rate of COVID-19 related deaths in Stockton-on-Tees (83.1 per 100,000 population) is ranked 180th highest (out of 336 LTLAs) in England & Wales.

The rate of COVID-19 related deaths in Stockton-on-Tees (to date) is lower than the North East and England & Wales averages.



*\*The number of COVID-19 related deaths in Stockton-on-Tees are provided by the Office for National Statistics (ONS). The ONS method of counting COVID-19 related deaths are “deaths that have been registered where COVID-19 is mentioned anywhere on the death certificate”.*

**Data Sources:**

COVID-19 Cases Government (Weekly data range: Mon 12 October – Sun 18 October 2020). Published Wed 21 Oct as it can 4-5 days for the numbers to be applied and stabilise from Government data sources.

COVID-19 Deaths ONS (Data release Tues 20 October 2020).