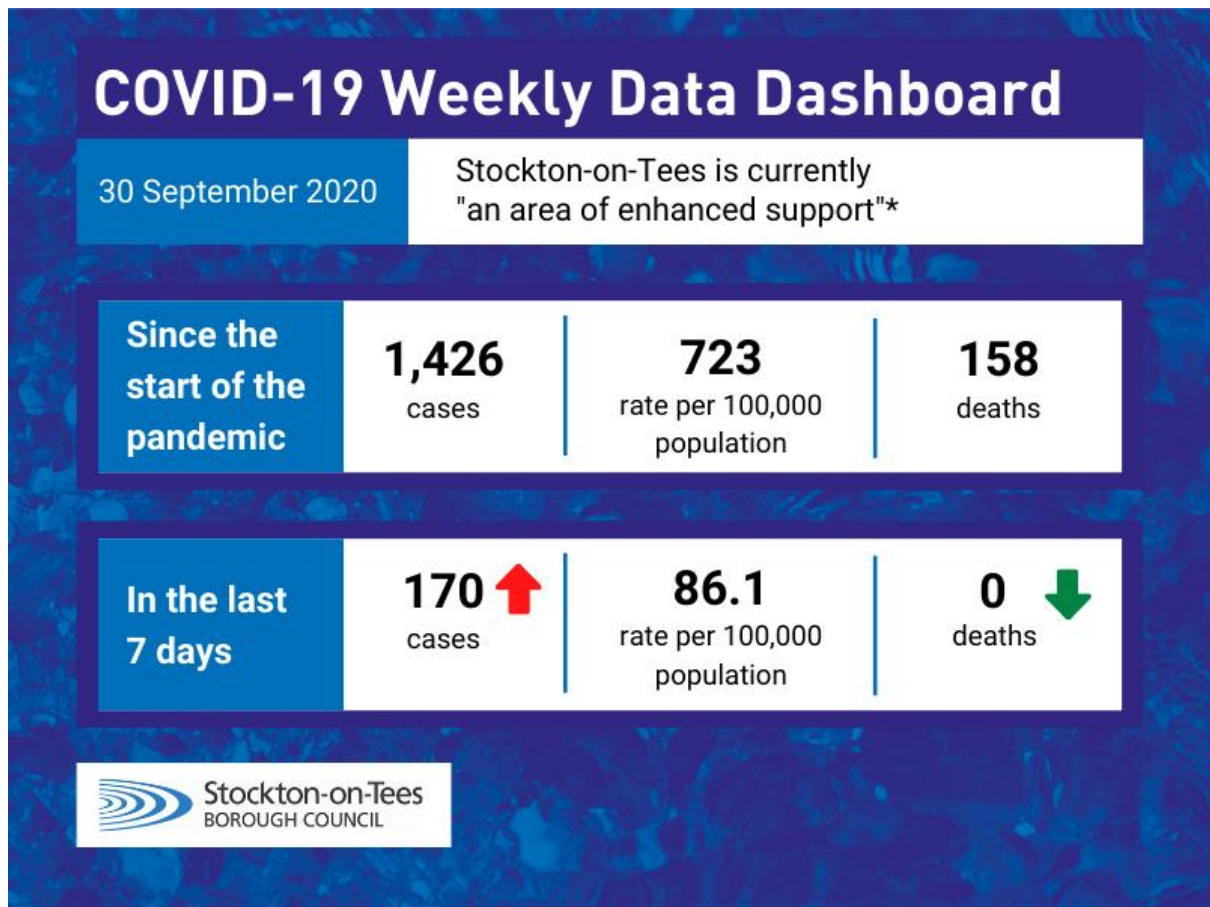


COVID-19 Dashboard – Stockton-on-Tees

Wednesday 30 September 2020



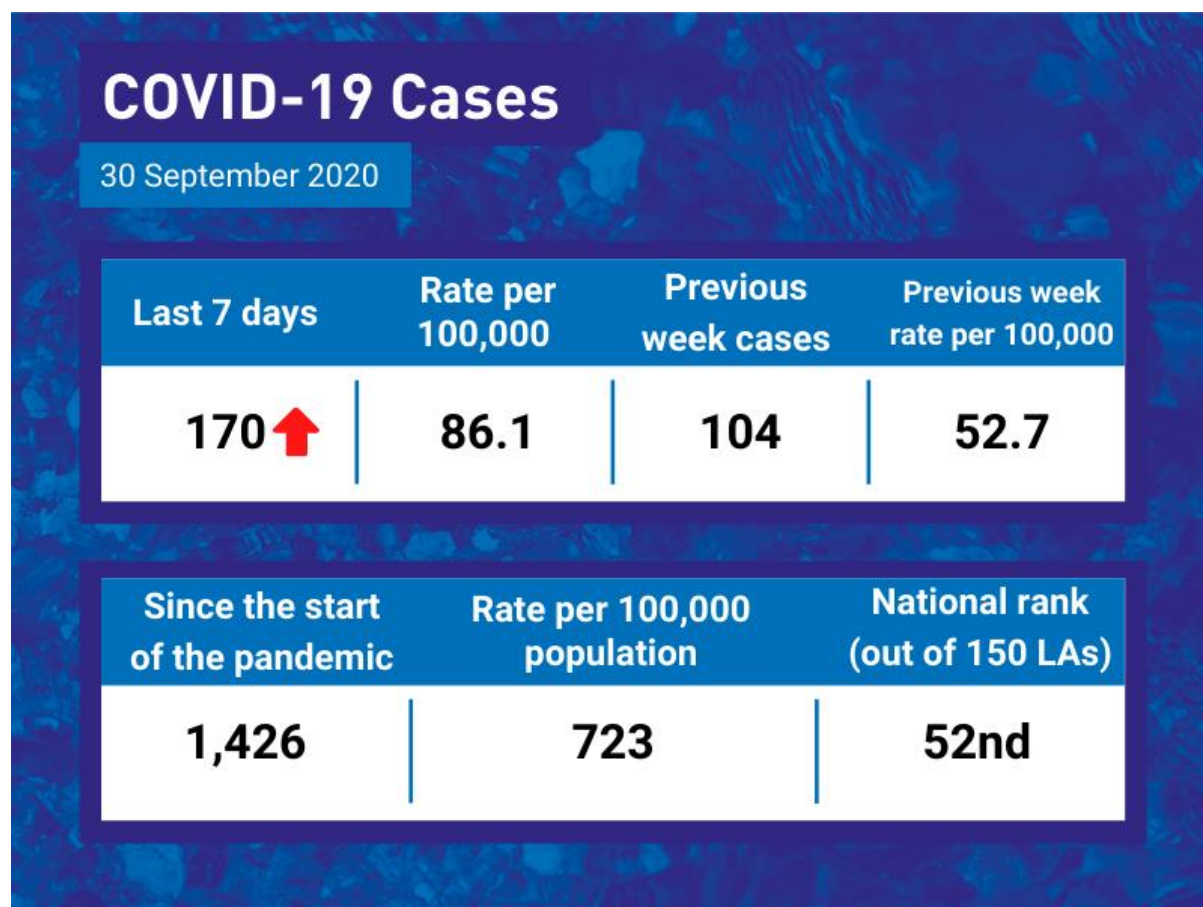
*Stockton-on-Tees is currently an “area of enhanced support” which is defined as:

Area(s) for enhanced support—for areas at medium/high risk of intervention where there is a more detailed plan, agreed with the national team and with additional resources being provided to support the local team (e.g. epidemiological expertise, additional mobile testing capacity).

[Click here](#) for the national COVID-19 surveillance report including the current Public Health England.

The national alert level remains at level 3.

COVID-19 Cases

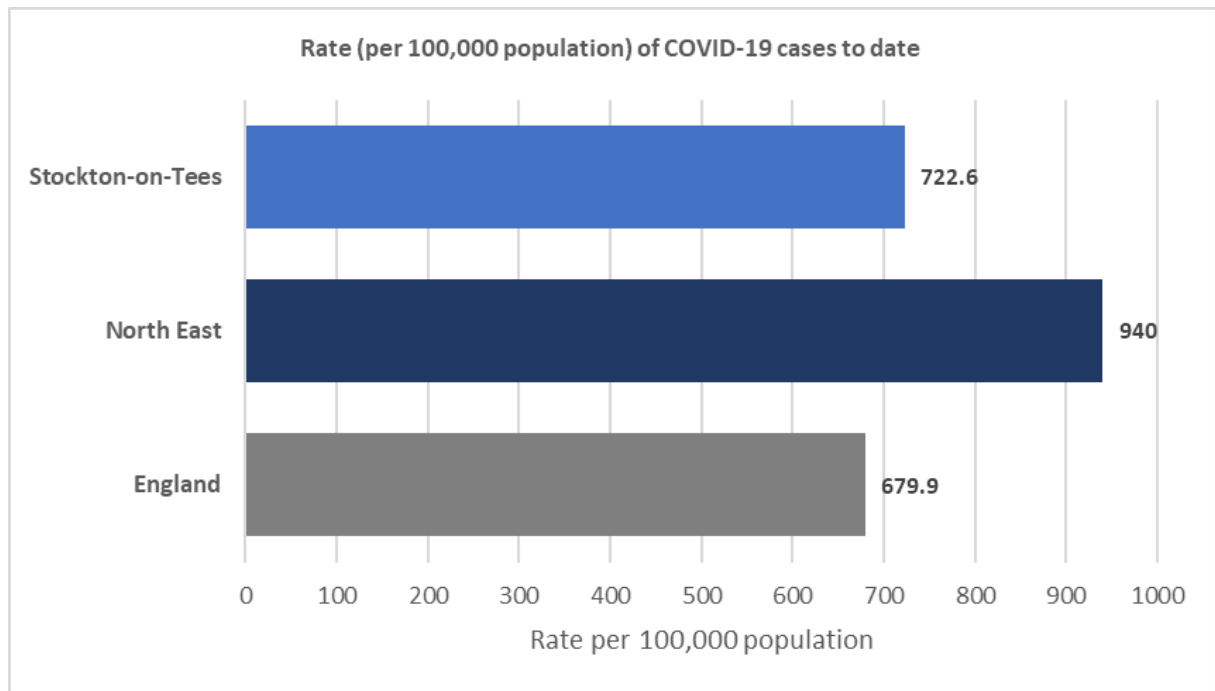


There were 170 cases of COVID-19 in Stockton-on-Tees in the last seven days, this is higher than the previous week, which saw 104 positive cases.

Since the start of the pandemic, there have been 1,426 cases of COVID-19 in Stockton-on-Tees.

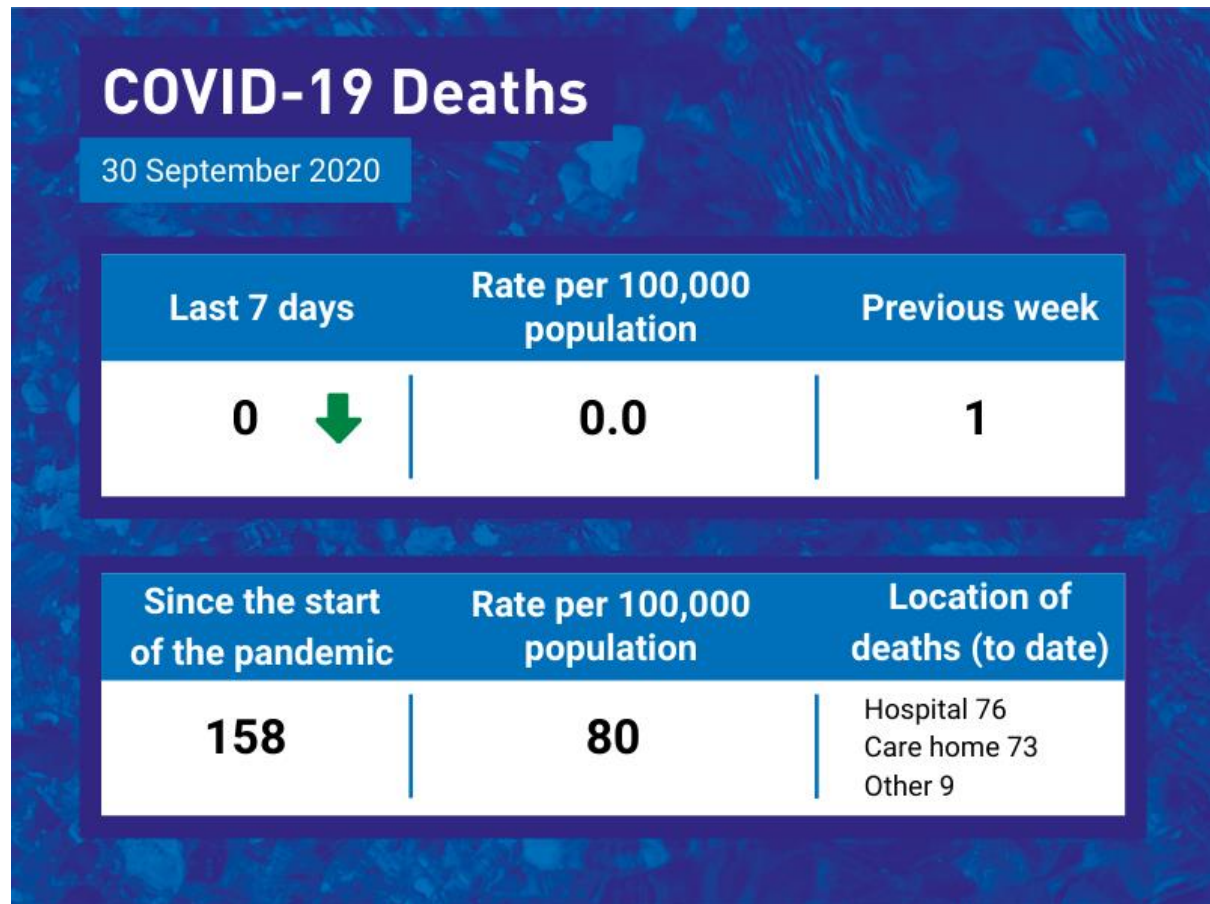
The rate of COVID-19 cases in Stockton-on-Tees (722.6 per 100,000 population) is ranked 52nd highest (out of 150 UTLAs) in England.

The rate of COVID-19 cases in Stockton-on-Tees (to date) is lower than the North East average, but higher than the England average.



Please note – The number of cases in the “Previous week” may be different to last week, as cases are often retrospectively added to the Government COVID-19 dashboard.

COVID-19 Deaths



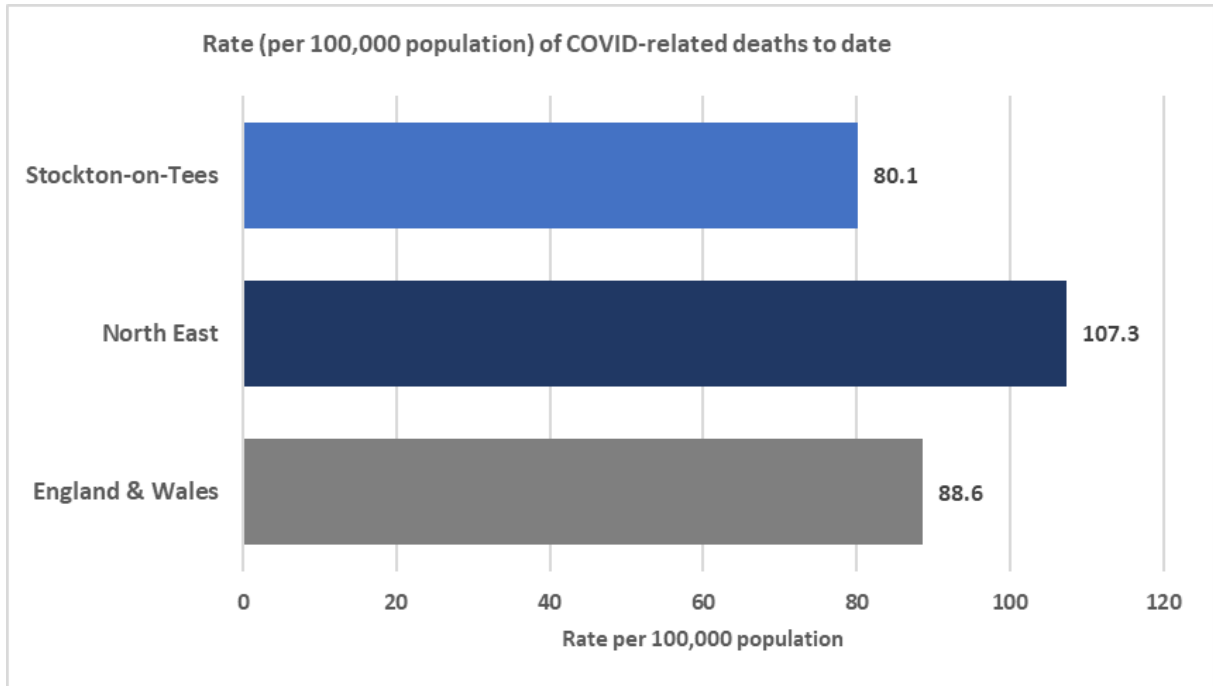
There were 0 COVID-19 related deaths in Stockton-on-Tees in the last seven days, this is lower than the previous week which saw 1 COVID-19 related death.

[Click here](#) for mortality rates involving the coronavirus (COVID-19) in Stockton-on-Tees by Middle Super Output Area (MSOA).

Since the start of the pandemic, there have been 158* COVID-19 related deaths in Stockton-on-Tees.

The rate of COVID-19 related deaths in Stockton-on-Tees (80.1 per 100,000 population) is ranked 190th highest (out of 336 LTLAs) in England & Wales.

The rate of COVID-19 related deaths in Stockton-on-Tees (to date) is lower than the North East and England & Wales averages.



**The number of COVID-related deaths in Stockton-on-Tees are provided by the Office for National Statistics (ONS). The ONS method of counting COVID-19 related deaths are “deaths that have been registered where COVID-19 is mentioned anywhere on the death certificate”.*

Data Sources:

COVID-19 Cases Government (Weekly data range: Mon 21 September – Sun 27 September 2020)

COVID-19 Deaths ONS (Data release Tues 29 September 2020)