



August 2010

Safer Stockton Partnership Crime & Disorder



Since 2007/08
Violence
Down 33%

Since 2007/08
Total crime
down 33%

Since 2007/08
Criminal damage
down 46%

Have your say...

You could win a 19 inch LCD TV/DVD and
£100 shopping voucher



Visit our website www.saferstockton.com

How to contact us

- Community Safety
communitysafetyteam@stockton.gov.uk
Tel: (01642) 527616
- Anti Social Behaviour
asbteam@stockton.gov.uk
Tel: 24 hour reporting hotline
(01642) 607943

Did you know?

The Safer Stockton Partnership is the 'crime' arm of the Local Strategic Partnership Stockton Renaissance.

Contents

	Pages
Introduction	3 - 4
Summary of partnership performance	5 - 7
What the data tells us	8 - 10
Crime in your area	11 - 15
Working with those who commit crime	16 - 17
Reduce anti social behaviour	18 - 20
Reduce drug related offending	21 - 25
Reduce violence	26 - 30
Reduce criminal damage	31 - 32
Diverting young people from offending	33 - 34
Emerging issues	35 - 37
Making an informed choice	38 - 39

**VISUAL
SECURITY
SYSTEMS**

For all Your CCTV Requirements
 See Our Main AD under CCTV
 01642 763535
 www.vizsec.com

Complete our survey at the back of this magazine and you could Win a 19" LCD TV/DVD combo and £100 in Shopping Vouchers!

Prize sponsored by Visual Security Systems
 You can also complete our survey on line at
www.saferstockton.com and www.stockton.gov.uk

Introduction

This is the fifth crime and disorder magazine produced by the Safer Stockton Partnership (SSP). It is our main consultation that we carry out every three years to identify the key concerns of residents. Funding for the production and delivery of the magazine comes from the partners on SSP and it's delivered to every door in the Borough. We do small scale consultations throughout the three year period and the information we gather helps us to direct our resources to where they are most needed.

Did you know?

In 2008 SSP celebrated 10 years of operation. During this time we have reduced our house burglary rate by 71%

During August to October 2010 we will carry out extensive consultation with residents. Look out for us and as well as having your chance to tell us what you think is most important you could also win a prize.

The aim of this magazine is to tell residents how we have performed over the last three years. We have included a summary which can be seen on pages 5 – 7 with more detail on each category later in the magazine. We hope that after you have read this magazine you will have a better understanding of the work of SSP and what we do on your behalf to make Stockton the safest place in the Tees Valley.



SSP members who were at the first meeting in 1998'

Geoff Lee (Chair of SSP) said; "The significant and encouraging reductions in crime and disorder in the last 10+ years can be attributed to the strength of co-operation and goodwill of all members of the partnership which includes community representatives. I hope the community will continue to support and guide the partnership in its efforts to make the Borough of Stockton-on-Tees a safer place in which to live and work. I have had the honour of chairing the Safer Stockton Partnership on two separate occasions- initially as the Police Commander for the Borough in 1998 and now as an independent director of Tristar Homes Ltd."

Fact

Over the last six years total crime in our Borough has reduced by 42%!

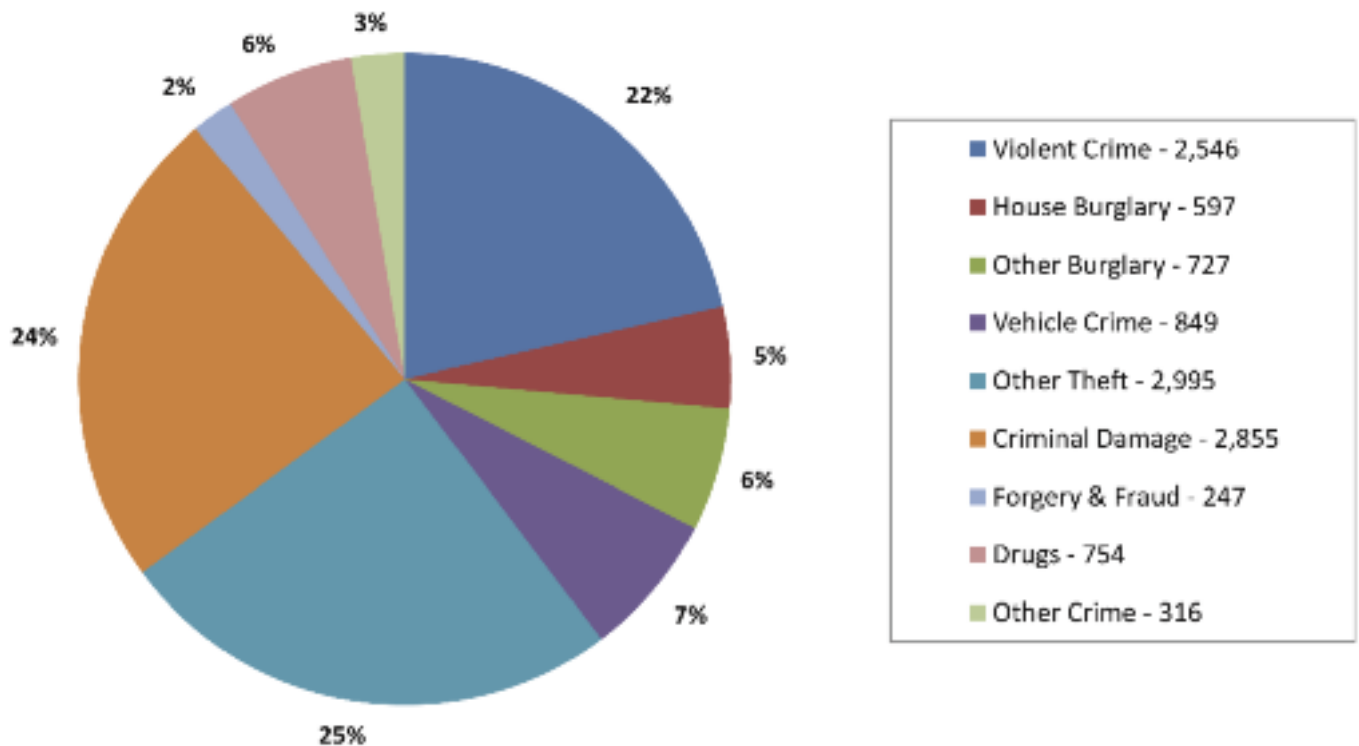
Fact

Stockton has the lowest Total Crime rate in the Tees Valley!

The last three years have been particularly successful for us and we have seen a level of stability in the partnership with Dave Brunskill holding the role of District Commander for the majority of these years. He has now retired leaving Stockton with the lowest crime rates since the beginning of the partnership. He can be seen here as he hands the helm over to Darren Best our new District Commander who was previously an Inspector in Stockton.



Breakdown of crime categories 2009/10



There were 11,886 crimes recorded in 2009/10, a reduction of 33% over the last three years!

The pie chart shows that the majority of crime is made up of three main crime types which are Other Theft (which can include shoplifting or metal theft), Criminal Damage and Violent Crime.

Summary of Partnership Performance

You Said – We Listened – We Did!

In the summer of 2007 we carried out the same consultation exercise as this one and more than 4,000 people told us what really mattered to them and what SSP should prioritise to make our Borough an even safer place.

- Reduce anti social behaviour
- Reduce drug related crime and anti social behaviour

- Reduce violence
- Reduce criminal damage
- Divert young people from offending

We set targets for each priority which are monitored by SSP every quarter. Performance monitoring papers can be viewed on www.saferstockton.com

Reduce Anti Social Behaviour

We maintained our approach of using prevention, support and enforcement to tackle this issue. The Multi Agency Anti Social Behaviour Team (ASB Team) were the first in the North East to use a Premise Closure Order on a privately rented property. The landlord was unwilling to work with us to tackle the problematic family he had given a tenancy to, so we applied to the Court, had the property closed, and the family were made to leave.

Over the last three years we have been contacted for help over 7,000 times. We have:

- issued almost 300 warning letters
- 67 Acceptable Behaviour Contracts (ABC's)
- obtained 31 Anti Social Behaviour Orders (ASBOs) / CRASBOs.

We work in schools to educate young people on the consequences of anti-social behaviour. The interactive Roach lesson delivered to year 6 and 7

pupils uses cockroach characters to help young people recognise and report crime and ASB they see. The lesson involves showing them how to complete our on-line reporting form and gives contact details for Crimestoppers. We have also developed a young victims lesson to complement this.

For more information contact Claire Sills (01642) 527616 or communitysafetyteam@stockton.gov.uk

During 2008 the Government conducted the Place Survey. Residents were contacted and asked how satisfied they were with how the Council and Police deal with anti social behaviour. We are pleased Stockton respondents showed an improved satisfaction level from a similar survey in 2006!

Fact

A CRASBO (Criminal Anti Social Behaviour Order) is where we ask for an ASBO at court as part of a sentence for an associated crime.

Did you know?

Detection rates of crime have increased from 25% to over 40% in the last three years.

Reduce drug related crime and anti social behaviour

Our most problematic drug users are now more stable. You told us you wanted us to target dealers and support those who misuse drugs. In response we have improved support services and widened what we offer which has contributed to an increase in those seeking treatment for their problematic drug use.

We have run a number of successful operations to tackle dealers and in one operation alone 35 dealers received a total of 165 years in prison.

Did you know?

We use a passive drugs dog to identify those using drugs in pubs and clubs. 39 people have been arrested for possession in these operations.

Reducing Violence

Over the last three years we have reduced violence by 33%. We use analysis to identify which types of violent crime are the most common in our Borough, and this tells us that it is actual bodily harm (50%) followed by assault without injury (23%).

One tactic we have used to be proactive is using section 27 notices, this enables us to send home those who are drunk and who could cause crime or anti social behaviour. They are banned from returning to an area for up to 48 hours and if they do so they can be arrested. Since section 27 notices were introduced we have issued 934 which means that 934 people were unable to go on to cause a problem for those who are enjoying an evening or day out in Stockton.

Our successful Pub Watch scheme has grown and in April 2010 reached a 100% membership rate covering 170 licensed premises in the Borough. With their help in the last three years we got CRASBOs on four individuals banning them from entering any Pub Watch premise. This makes pubs and clubs safer for those who want to enjoy a peaceful night out.



Fact

The Landlord Liaison Scheme provides tenant background checks for free. Any landlord can join, whether you have one property or a hundred and one!

Fact

Of the 20,701 10 to 17 year olds in our Borough, 92% are not involved in crime!

Reduce Criminal Damage

After you told us this was a priority we analysed every incident of criminal damage to understand what was happening. This told us 37% of incidents were against houses and 39% against vehicles. This crime type is hard to detect as incidents often happen during the hours of darkness. By following up all incidents we learned that many were in fact accidents and not criminal damage!

We also took action against a group of young people who had caused damage to vehicles and we have continued to remove graffiti and where possible make those responsible remove it!

Emerging Issues

SSP also chose emerging issues as a theme and we have used monthly Tasking and Coordinating meetings and the Partnership Strategic Assessment to identify which crime type we need to focus on based on intelligence and reported crime and anti social behaviour. Other Theft has remained the key priority within this category but the specific types of crime within it have changed between theft of metals and shoplifting. We have also focussed on alcohol related crime, providing reassurance, and in line with national policy preventing violent extremism.

Divert young people from offending

We were successful in bringing in funding through the Youth Crime Action Plan that has enabled us to run a range of activities for young people to reduce the chance of them drifting into crime due to boredom. We do extra patrols in areas with the highest level of incidents and officers on patrol can give advice to young people about where they can go to join in activities such as football sessions, the location of the two youth buses and other youth clubs in their area. Young people can also join the Police or Fire Cadet scheme.

For further information contact: Cleveland Police Cadet Programme - 0845 2713883, Cleveland Fire Cadets Contact Mick Jones - (01429) 872311.



This photo shows Dan Steer the Community Safety Assistant with Helen Dobson and Stuart Coupland, two Police Cadets

What the Data tells us

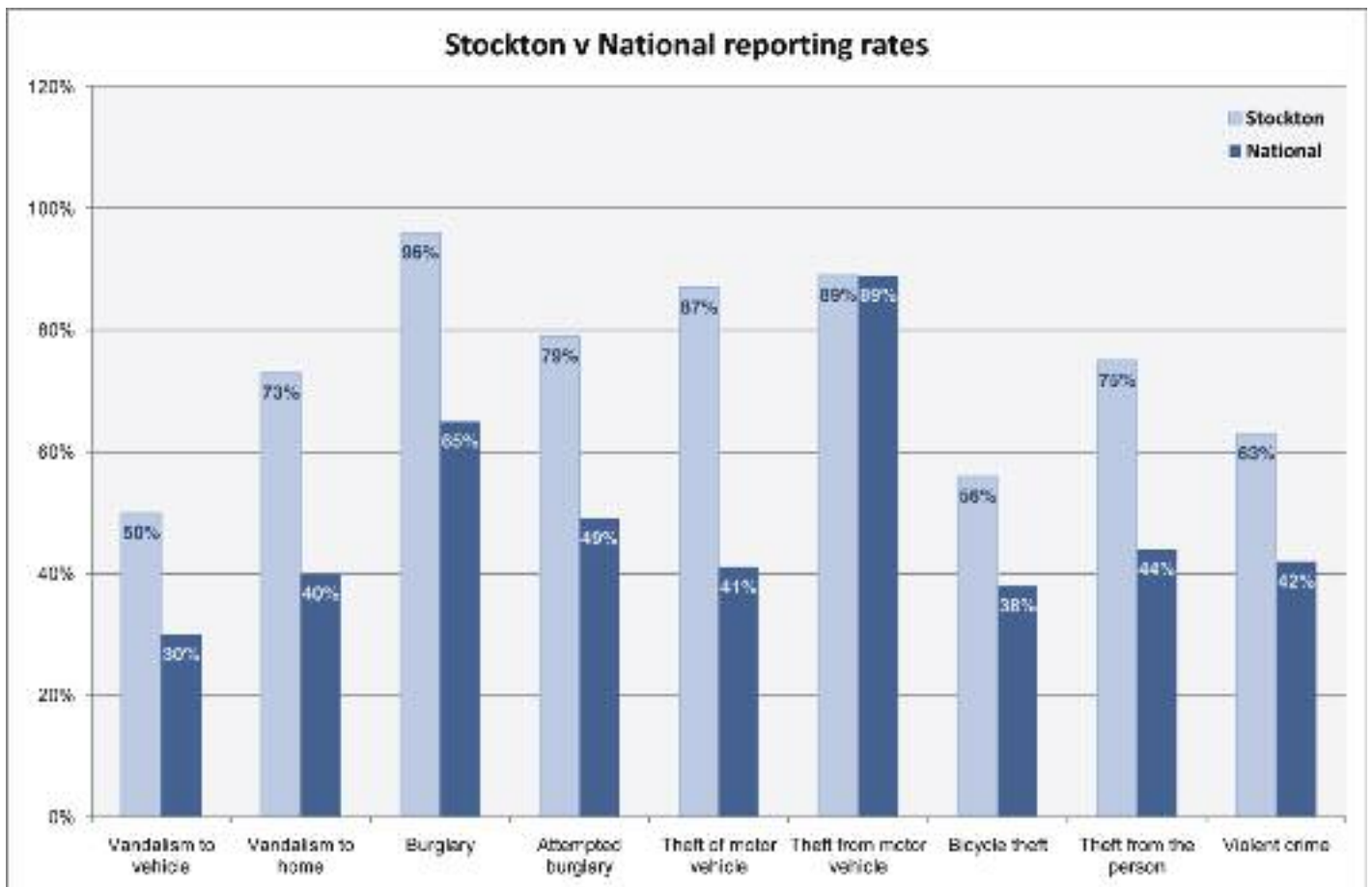
Understanding crime and ASB data

Every year the Home Office publishes crime statistics for England and Wales collected from two sources; Police recorded crime statistics and the face to face British Crime Survey (BCS). In 2008 the Government also introduced the Place Survey which is a postal and telephone survey asking people to report their perceptions of crime, anti social behaviour and drug and alcohol related crime.

SSP also collect partnership data from monthly Tasking and Coordinating meetings and the Partnership Strategic Assessment (PSA) to identify which areas suffer the highest levels of crime and anti social behaviour and where our residents feel most unsafe.

The Home Office measures our performance against other Crime and Disorder Reduction Partnerships (CDRP) and Basic Command Units (BCU).

The council use Ipsos MORI to consult with residents and in this survey we ask whether residents have been a victim of crime. We can then compare this with the results of the BCS and this tells us Stockton residents are more likely to report being a victim of crime than the national average. So we know by using all of this data, we are getting an accurate picture of crime in our area.



Crime comparison over the last three years

Recorded Crime	2007/08	2008/09	2009/10	change	%change
Violence	3,452	2,738	2,324	-1,128	-33%
Robbery	117	107	53	-64	-55%
Sexual offences	183	178	169	-14	-8%
Dwelling burglary	747	752	597	-150	-20%
Other burglary	951	915	727	-224	-24%
Theft of a motor vehicle	465	418	328	-137	-29%
Theft from a motor vehicle	845	660	521	-324	-38%
Vehicle interference	138	91	90	-48	-35%
Other theft	4,411	3,773	2,995	-1,416	-32%
Criminal damage	5,246	3,622	2,855	-2,391	-46%
Forgery & fraud	305	301	247	-58	-19%
Drugs	586	712	754	168	29%
Other crime	207	203	226	19	9%
TOTAL CRIME	17,653	14,470	11,886	-5,767	-33%

Overall crime has reduced by a third in the last three years. The biggest reduction seen is for robbery, which has more than halved since 2007/08. There have also been excellent reductions in:

- Criminal damage (down by 46%)
- Violence (down by 33%)
- Vehicle crime (theft of vehicles down by 29% and theft from a vehicle down by 38%)
- Drug offences have increased by 29% over the last three years, but this is positive as it means that more drug activity has been uncovered by the Police.

The only other category to show an increase is other crime, however numbers of this type of crime are small and include a range of crime types such as ASBO breaches, dangerous driving and obscene publications.



To find out when your next Cuppa with a Copper session takes place please visit the your neighbourhood page on www.cleveland.police.uk or call the Neighbourhood Policing line on 01642 302930



Fact

There are four Local Area Partnership Boards (LAPB) in Stockton and a representative from each sits on the Safer Stockton Partnership.

Central LAPB covers: Hardwick; Bishopsgarth and Elmtree; Fairfield; Hartburn; Grangefield; Parkfield and Oxbridge; Stockton Town Centre; Norton and surrounding villages

Eastern LAPB covers: Thornaby; Ingleby Barwick; Hilton; Maltby and surrounding villages.

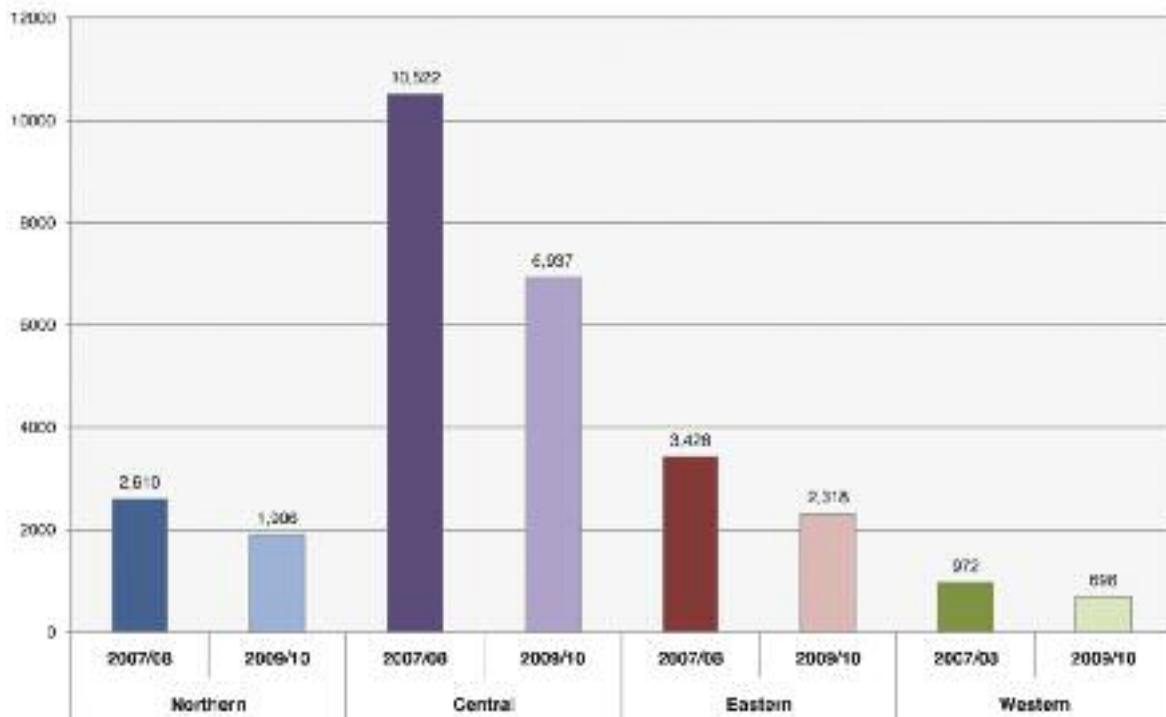
Northern LAPB covers: Billingham; Wynyard; Wolviston and outlying areas.

Western LAPB covers: Yarm; Eaglescliffe; Kirklevington; Long Newton; Elton and surrounding villages.

SSP hold twice yearly Face the People sessions rotating between each LAPB area where residents can come along to meet members of the partnership and tell us what issues concern them most. If you would like to know when the next session is going to be held in your area, contact Claire Sills on (01642) 527616.



Crime by Local Area Partnership 2009/10



Crime has reduced in each of the Local Area Partnerships over the last three years. Not surprisingly, Central Area has the most crime because it also has the highest population levels and includes more wards with high levels of deprivation.

Crime in your area

How do we compare?

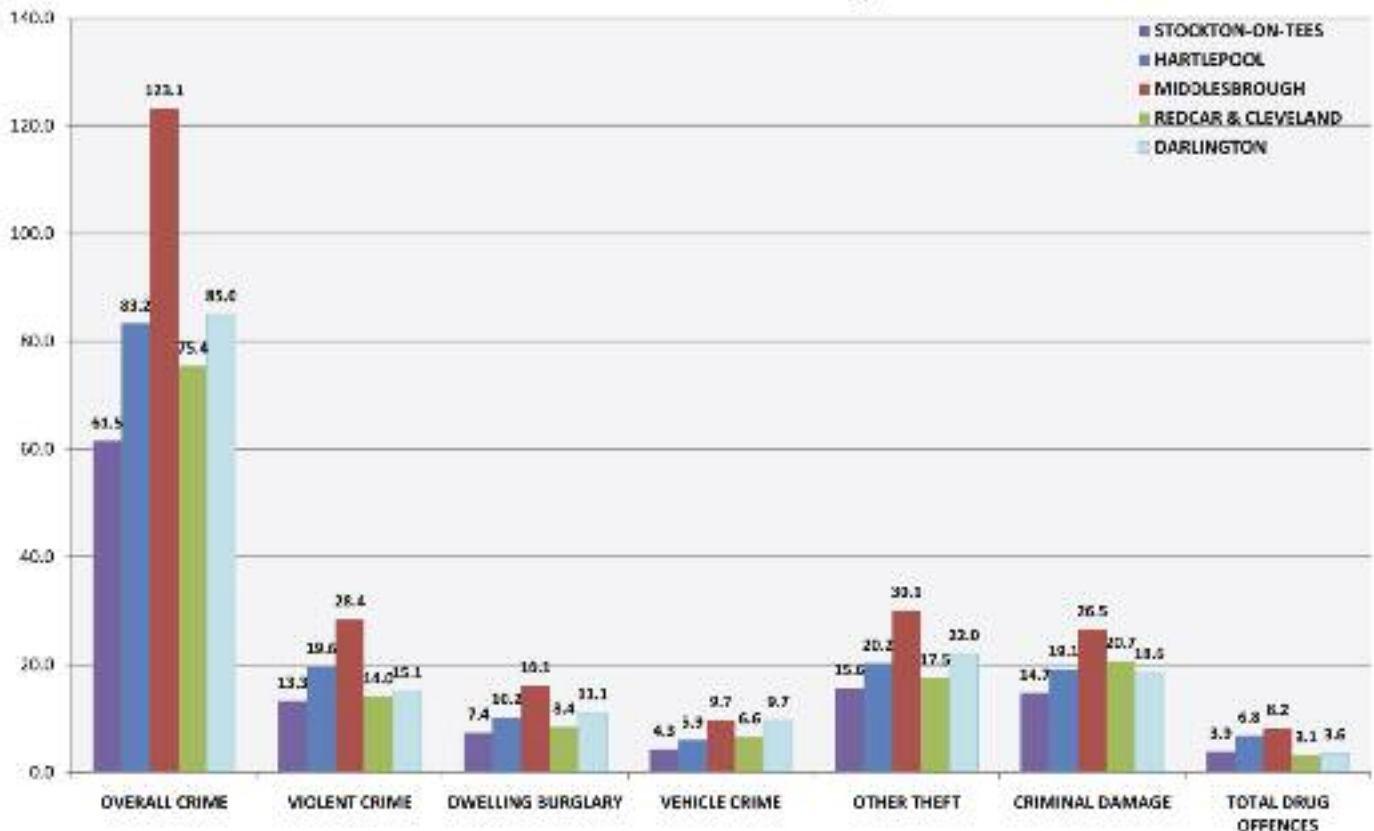
When compared for total crime we are ranked 6th in a group of similar CDRPs and 5th in our group for similar BCUs, which means we are significantly better than average in both groups.

We also compare favourably when measured against our neighbours and we are the safest place in the Tees Valley for the third year running.

Did you know?

We have the largest population in the Tees Valley. Of the 664,400 residents nearly 30% (192,895) live in Stockton-on-Tees.

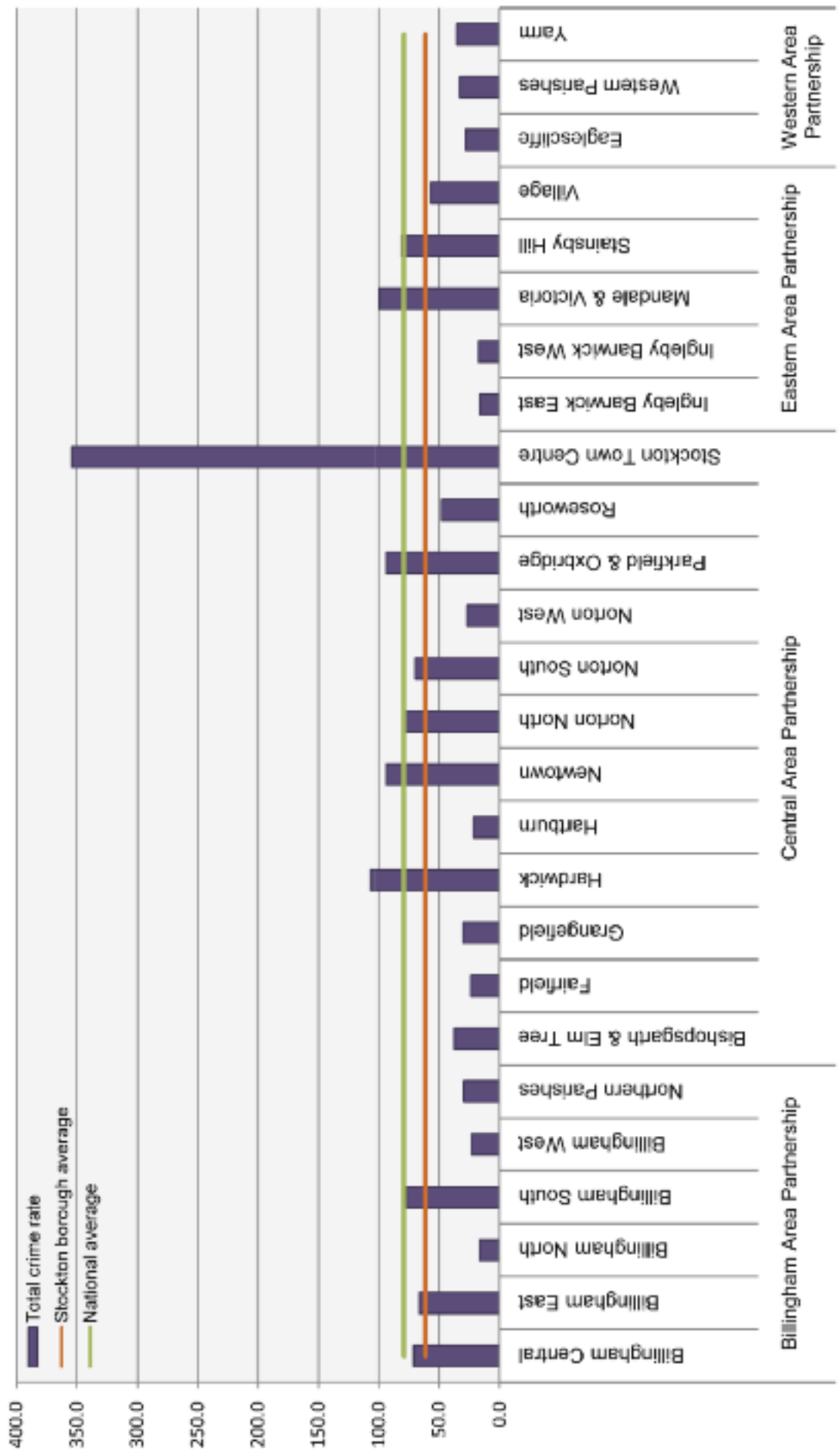
Crime rates across the Tees Valley 2009/10



Fact

We have the lowest rate in the Tees Valley for Total Crime, Violent Crime, Dwelling Burglary, Vehicle Crime, Criminal Damage and Other Theft.

Total crime rate per 1,000 residents by ward and Local Area Partnership





Thornaby Town Centre



Yarm Town Hall

Did you know?

To identify which ward you live in you can visit Crime in Your Area on www.saferstockton.com

The Town Centre Effect

We know that most town centres have higher levels of certain types of crime and anti social behaviour because they attract more people due to the concentration of shops and leisure facilities within them. We can see this particularly in Stockton Town Centre ward which is the biggest of our town centres.



Stockton Town Centre



Billingham Town Centre

The chart alongside shows the wards with highest levels of total crime, these wards also have other problems that are on the next two pages.

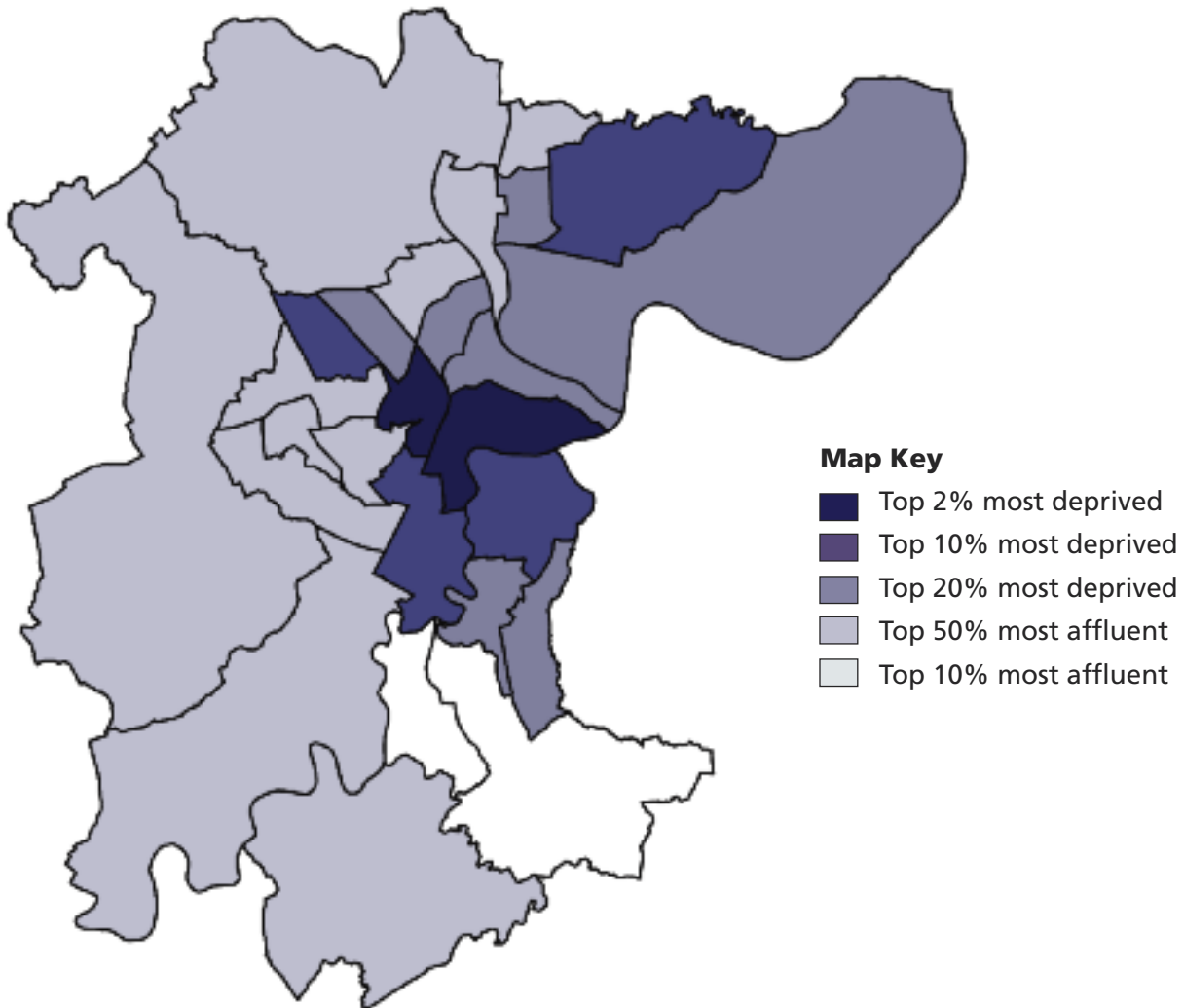
Fact

We have two wards in the top 2% most deprived wards nationally, a further four wards in the top 10% most deprived wards, and another seven wards in the top 20% most deprived wards. There are also two wards in the top 10% most affluent wards nationally.

How does Crime Relate to Other Problems

It is important to understand the links between crime, ASB and deprivation. Each ward in England and Wales is ranked out of 7,900, with one being the most deprived. The rankings are

also published by Local Authority area and Stockton is ranked 71st out of 354, meaning we are in the top worst quartile for deprivation in England and Wales.



Our Borough has an unusual mix of social and economic factors, with areas of disadvantage sitting alongside areas of affluence. The map above shows the distribution of deprivation across Stockton.

Five of our wards contain areas that have the highest levels of crime in them and also feature as being within the top 10% most deprived nationally. Two have town centre shopping and/or leisure facilities and we know that crime is likely to be higher where people gather to shop or for entertainment. Yarm is an exception, it has a busy shopping and

entertainment hub but only accounts for 3% of the Borough's crime.

The chart on the next page can be used to see if your ward has more or less crime compared to levels of deprivation. We have listed all wards showing the ranking for deprivation on the left (with the national ranking figure alongside) and the total crime rate per 1,000 population on the right. We would expect those wards high in deprivation to also be high in crime. The 'smiley face' shows whether crime is higher, lower or about what you would expect given the levels of deprivation.

Deprivation Rank			Crime Rank		
1	Stockton Town Centre	25	1	Stockton Town Centre	☺
2	Newtown	199	2	Hardwick	☺
3	Mandale and Victoria	497	3	Newtown	☺
4	Hardwick	536	4	Mandale and Victoria	☺
5	Parkfield and Oxbridge	664	5	Parkfield and Oxbridge	☺
6	Billingham East	750	6	Stainsby Hill	☺
7	Stainsby Hill	881	7	Billingham South	☹
8	Roseworth	882	8	Norton South	☺
9	Norton North	911	9	Norton North	☺
10	Norton South	1137	10	Billingham East	☺
11	Billingham Central	1149	11	Billingham Central	☺
12	Billingham South	1451	12	Village	☺
13	Village	1533	13	Roseworth	☺
14	Bishopsgarth and Elm Tree	3921	14	Bishopsgarth and Elm Tree	☺
15	Western Parishes	4099	15	Yarm	☹
16	Grangefield	4628	16	Grangefield	☺
17	Billingham North	5210	17	Western Parishes	☺
18	Fairfield	5609	18	Northern Parishes	☹
19	Norton West	5765	19	Eaglescliffe	☹
20	Billingham West	5847	20	Norton West	☺
21	Yarm	5989	21	Fairfield	☺
22	Northern Parishes	6048	22	Billingham West	☺
23	Eaglescliffe	6244	23	Hartburn	☺
24	Hartburn	6898	24	Ingleby Barwick West	☺
25	Ingleby Barwick West	7229	25	Ingleby Barwick East	☺
26	Ingleby Barwick East	7443	26	Billingham North	☺

☺ Crime ranking significantly better than deprivation ranking (by 3 places)

☺ Crime ranking in line with deprivation ranking (by 3 places)

☹ Crime ranking significantly worse than deprivation ranking (by 3 places)

Working with those who Commit Crime

In 2008 the Probation Service merged with the Prison Service to become the National Offender Management Service (NOMS). In 2010 Teesside and Durham service merged. Whilst the merger is in its early stages it is progressing well and working towards its aim of providing a more efficient and effective service. The probation service have always been active members on SSP and we have had a multi agency Prolific and Priority Offender (PPO) service in Stockton since 2003. This focuses on people who commit the highest levels of acquisitive crime (i.e. theft). Since the scheme began we have operated a 'before and after' monitoring system based on arrests which tells us the frequency of offending has reduced by between 50 - 60% and the seriousness of offending has reduced by 60 – 70%.



Community Payback

Quote from JH an ex PPO on Friday 16th April 2010.

"I can't thank the PPO team enough. I have now got my own tenancy after being in Elm House in one of the flats. They have helped me to turn my life around and getting me my own place is brilliant."

We have now developed the scheme to include high crime causers as a category of people whose frequency of offending is high. The Police, Probation and the Council have invested resources into this new service.

Managing community sentences is a key role for Probation and we have a highly visible and productive work plan in place covering the Borough. Those serving a community sentence work on the Community Payback scheme and have removed litter, graffiti and tidied up green spaces as part of the work they do to complete their sentence.

Community Cashback was introduced by the Government in 2009 to enable local people to benefit from the proceeds of crime. The funding is managed by the Local Criminal Justice Board which is made up of representatives from Courts, CPS, Police, Legal Services Commission, Victim Support, Prisons, Youth Offending Service and Probation. Areas can bid into this fund to provide services to improve their area. In 2009 SSP made a bid and we obtained £30,000 which was used to improve the Borough's CCTV system.

Fact

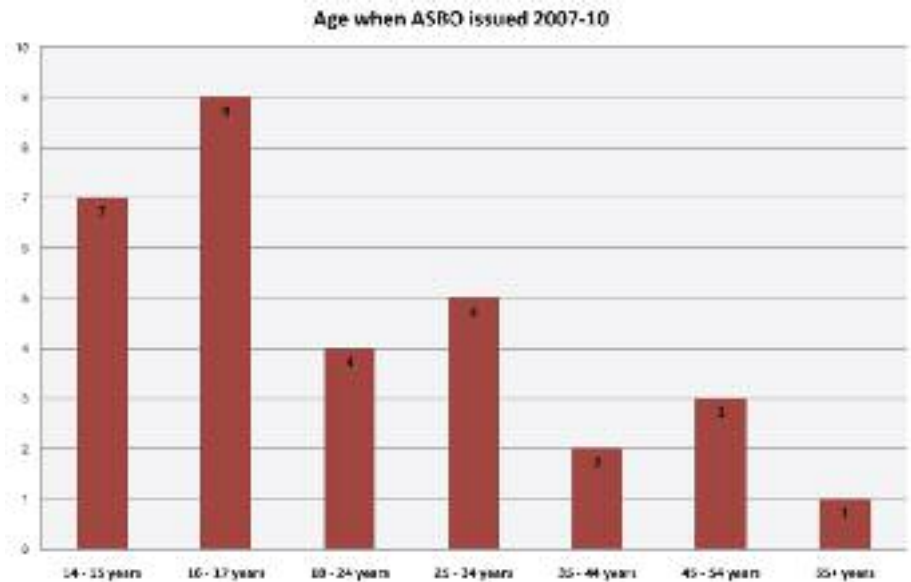
In April 2010 the National Offender Management Service became an equal partner (Responsible Authority) on the Safer Stockton Partnership.

Fact

First time entrants into the Criminal Justice System have decreased 41% from 464 in 2007/08 to 272 in 2009/10.

When a young person (under 18), commits a crime their sentence will be managed by the Youth Offending Service (YOS). Over the last three years the YOS has supported 1,618 young people.

Some young people can be deterred from entering the Criminal Justice System but they do come to the attention of the ASB Team where we continue with our successful approach of prevention and support to help deter them. This chart shows the ages of those who have received an ASBO over the last three years.



Gardening Reparation

In 2008 the YOS started to run a restorative justice project to bring victim and offender together using mediation to discuss the impact that the crime has had on them. Since April 2008 to March 2010, 401 victims were contacted and 112 have benefited from this approach.

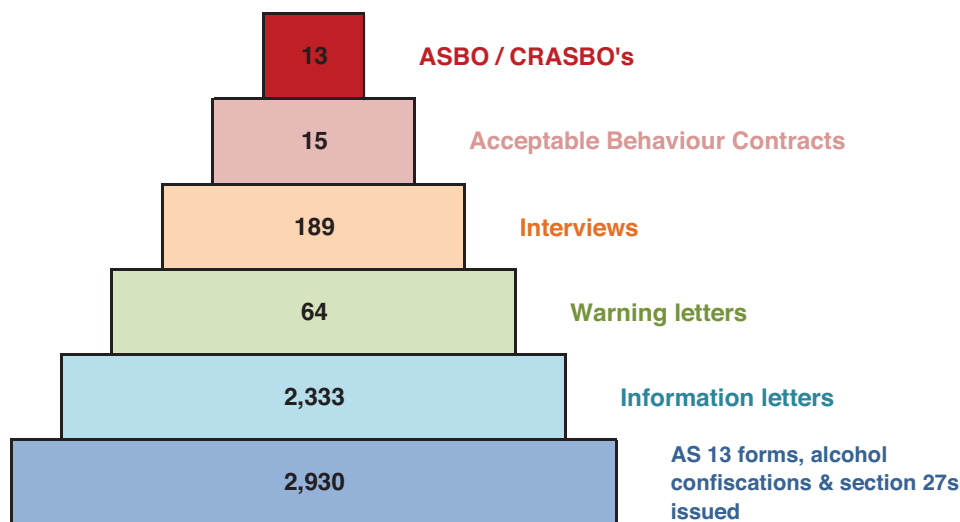
Reparative justice is also provided by the YOS. In 2009 they ran a successful cycle scheme where bikes donated by the Police were restored by young offenders. Some bikes were sent to Africa to benefit young people there, some were donated to local victims of crime whose bikes had been stolen where they are required as a means of transport to school or work. Young people also provide reparative work by painting fencing, removing graffiti, working in community gardens and delivering leaflets. A lot of this work is done in the evening and at weekends so it impacts on their time off from work or school.

Reducing Anti Social Behaviour

The ASB Team has maintained a prevention, support and enforcement approach. We know early intervention can prevent bad behaviour from escalating. In the last year alone we carried out nearly 3,000 actions to deal with anti social behaviour, some are minor but others can be more serious. During 2009/10 we obtained 13 ASBO/CRASBOs and over the three year period the total was 31, making Stockton a safer place for our residents.

The team are asked for advice from a range of sources from Councillors, members of the public, Tristar Homes Ltd (THL), housing associations and other partners. Sometimes a query can be dealt with without enforcement, other times we have to take enforcement action to give the community some relief.

Anti Social Behaviour actions taken in Stockton April 2009 - March 2010



This shows that our lower level actions are having a positive effect in reducing more serious anti social behaviour.

Enforcement

We first started using AS13s in 2006 and since then 10,733 have been issued. An AS13 can be given to anyone seen causing anti social behaviour by a Police Officer, a PCSO, a Neighbourhood Enforcement Officer (NES) or an ASB Officer. If someone receives two or more we may write to them or their parents

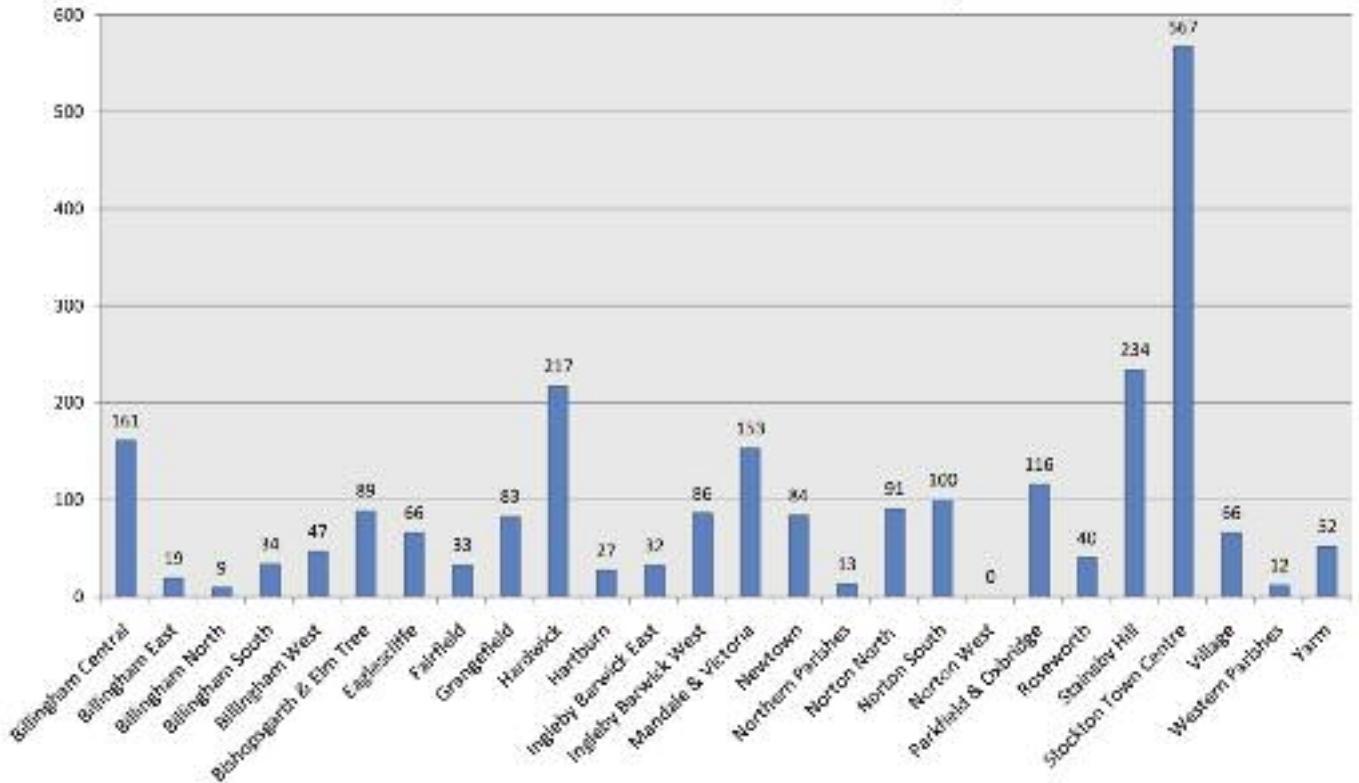
and ask them to come into the police station to discuss their or their child's anti social behaviour.

The chart on the next page shows the number of AS13's we have issued by ward since April 2009.

Fact

NES focus on three issues; environmental crime, nuisance vehicles and anti social behaviour.

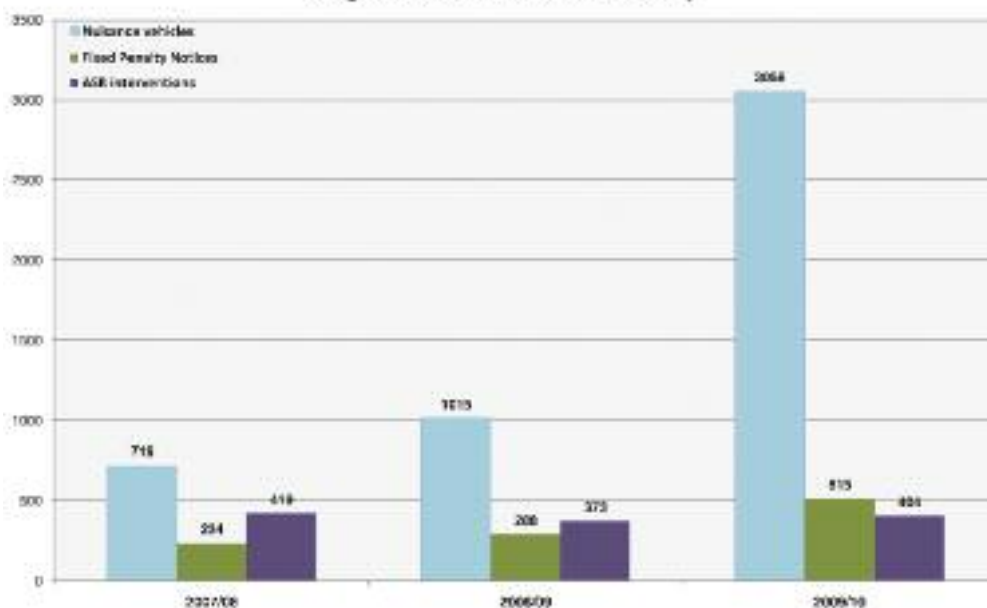
Ward where AS13 forms were issued 2009/10



The ASB Team and NES work together closely doing joint patrols in hot spot areas, sharing intelligence and information. The Security Centre manage the ASB hotline from 5pm to 9am and on weekends. This means that residents can report an incident when it happens. If a call needs an urgent response NES will be despatched when the call is received out of hours and an ASB Officer during office hours.

ASB REPORTING HOTLINE (01642) 607943

Neighbourhood Enforcement Activity



Fact

NES has issued over 1,000 Fixed Penalty Notices (FPN) in the last three years.

Prevention

Work in schools is vital for our prevention work. We can do one to one sessions with a young person who is causing a problem in the school or attend lessons in schools in areas that are having particular problems. You can see more about this on pages 33-34.

Working with Landlords

We also have a close working relationship with THL, other registered social landlords and some private sector landlords. When looking at taking any action against tenants we will discuss the range of options available to us such as:

- Serving a Notice of Intention to Seek Possession (the first step to eviction)
- 'Crack house' Closure or Premise Closure Order
- ABC/ASBO/CRASBO
- Family Intervention Project (FIP)

In December 2009 we were the first partnership to use a Premise Closure Order in the North East. This was against a private landlord who was unwilling to tackle the bad behaviour of his tenants. The Court closed the property for

three months ordering the tenants to leave the house immediately. The property remains empty (as of August 2010) and the council is in the process of applying to Court to recover the cost of making the order against the landlord.

We would much rather work with landlords and we provide a free



service to all landlords in the Borough to access a reference prior to them giving out a new tenancy. During the last three years the service has:

- Dealt with 5,762 requests for references
- Signed up 124 new members

Support

We have recently introduced a risk assessment template for ASB Officers to identify whether a caller is vulnerable and if they are, a referral is made to our ASB Support officer. Over the last three years the officer has helped 170 individuals and families. The aim is to help anyone who may be causing nuisance and anti social behaviour who may also be vulnerable themselves and also to support communities who are affected by their behaviour. Our Victim and Witness Support Officer makes daily contact with local Courts to find out the outcome of ASBO breaches, all victims and witnesses involved in the case are then contacted to tell them the outcome of the hearing. Contact is also made with victims and witnesses of ongoing investigations to ensure they are fully supported.

We also work with the Parenting Early Intervention Programme (PEIP) alongside Children, Education and Social Care (CESC), the Police and Barnardos on the Strengthening Families Programme helping parents and young people develop positive relationships through better communication.

One parent said "I always thought that going on a parenting course would mean I was 'a bad parent', however I now understand and want others to realise that by attending a parenting course means that you are a good parent and want to make changes for the better."

Fact

The Landlord Liaison Scheme has 20,189 properties on its books.

Reducing Drug Related Offending

Drug Scene Summary

Within our Borough, as in the rest of the country, a small minority of people take drugs, which can lead to negative consequences for themselves, their families, and the communities where they live.

The latest estimate from the Home Office is that there are around 1,500 problematic drug users in our Borough, which represents less than 1% of the overall population of our Borough. Of these, over 1,324 individuals have accessed treatment for their drug use during the past year.

The profile of drug use is changing here, as it is nationally, with a reduction in the number of people using Heroin. This is more evident among younger drug users, who are more likely to drink high levels of alcohol, and use cannabis, so called "legal highs", or stimulants such as Cocaine. Younger adults are also less likely to access treatment to help them address their drug use.

Within the Borough there are a range of initiatives in place. Partnership working is key to this approach, with many different organisations working together to find effective solutions to problematic drug use. These organisations include the Police, Community Safety, the Drug and Alcohol Action Team, the Primary Care Trust, Probation, the Prison Service, Job Centre Plus, housing providers, Children's Service, and local Drug Treatment Services.

Activities being undertaken to tackle problematic drug use

Problematic drug use (PDU) doesn't only affect the drug user, it has a negative impact on their children and families. Around half of our PDUs are parents, so it's important that appropriate support is given to parents and children to ensure they don't come to any harm. Families and carers often have a key role in enabling individuals to overcome their drug problem. **Bridges** is the carers' service for families and carers of PDUs helping those affected by someone else's drug use through individually tailored packages of support. Telephone (01642) 605222 for more information.

We have made changes to the local drug treatment system to meet changing trends, and help those who want to become drug free to do so. Our new services now include:

- Stimulant Outreach Service (01642) 613358 where workers can confidentially meet individuals using stimulant drugs such as cocaine who want help at a location that suits them.
- STAR Project (01642) 356088 for those moving through the treatment system to access structured day care and aftercare (01642) 356088

Did you know?

There is a trend towards poly drug use, mixing illegal drugs and/or prescribed drugs and/or alcohol. Over the past couple of years there have been a small number of drug related deaths locally, and poly drug use was a common factor.

Fact

Less than 1% of the population of Stockton are problematic drug users.

We also have:

- High Street Project (01642) 613358 our harm minimisation project offering support and help to reduce the harm caused by drugs.
- VISION our complex needs service (01642) 613358.
- CJIT, the company which delivers drug and alcohol services, aims to reduce drug related offending (01642) 614567.
- Birchtree Practice our specialist prescribing service (01642) 633561.
- ABS the NHS service offering community based specialist treatment for those with alcohol and/or drug problems (01642) 802424.
- STASH is our service for those aged 18 and under who have a problem with drugs and/or alcohol (01642) 606260.

There is also a 24/7 Stockton Drug and Alcohol Helpline which anyone who has concerns can ring: 0800 0522050.

William said, "I started using the treatment services when I was going through a bad time in my life and it was my first step towards recovery. My key workers inspired me they have changed mine and my family's life, just in the last 12 months. In this time I have gained a number of qualifications and been to college. If I had not gone into the services I would not be doing the positive things I am doing and I would not be where I am in my life now."

Positive Outcomes

Increasing numbers of individuals are managing to overcome their drug problem. These successes are achieved following support by community treatment services, and sometimes following intensive treatment at residential rehabilitation centres. The numbers going into residential rehab have increased over the years.

Year	Numbers in rehab	Total numbers in treatment	% of total
2007/08	29	1,240	2.3%
2008/09	51	1,338	3.8%
2009/10	54	1,324	4.1%

The progress and outcomes of everyone in drug treatment is monitored regularly using the Treatment Outcomes Profile, and the latest information from this shows treatment is effective in reducing injecting drug use (which reduces the transmission of blood borne viruses), reducing crime and having a positive impact on general health and housing.

As well as support a key element of partnership working is to disrupt the supply of drugs coming into the Borough.

Operation Stockholm is an example of how effective partnership working is. This operation ran for 9 months and 40 people were arrested. Of those 35 received custodial sentences totalling 165 years! During the operation drug support workers were on hand to offer support and encourage drug users to enter treatment services.

Did you know?

It is not only heroin and cocaine that result in a prison sentence. Lee Westwood was given an 18 month prison sentence for supplying Amphetamines. Ian Kitchen and Antony Smiles were each sentenced to 18 months in prison for cultivating cannabis.

Fact

Glen Walker was convicted of dealing class A drugs and as well as going to prison he had to repay £8,000.

Did you know?

In one year alone the police seized cannabis with a street value of more than £600,000!

Did you know?

Those who make a living out of dealing drugs can lose more than their liberty.

Jonathon Moorby was convicted for the supply of controlled drugs. In 2008 Cleveland Police Financial Investigation Unit and the Regional Asset Recovery Team obtained a confiscation order and he was ordered to pay back nearly £49,000!

Did you know?

Over the last two years more than £130,000 has been seized by the police in more than 800 drug interventions.



Sam (Drugs Dog)

Sam and his team of trained dogs can sniff all forms of drugs and pick out anyone carrying them. We use the dogs in pubs and clubs to identify whether people have cocaine in their possession or any other illegal substance. Sam is also used at airports and train stations.

Fact

If you wish to anonymously report drug dealing activity you can call Crimestoppers FREE on 0800 555 111.

In our last consultation in 2007 45% of respondents told us that people using/dealing drugs was a problem for them and 44% said alcohol misuse and street drinking was a key concern under anti social behaviour issues. We work closely with our partners in Health to ensure we are coordinating our efforts with SSP focusing on crime and anti social behaviour caused by alcohol misuse and the DAAT leading on the health side.

In April 2009 the Drugs Action Team became a Drugs and Alcohol Action Team as well as amalgamating with the Safer Stockton Partnership. Since that time we have developed an Alcohol Strategy to help us to deal with the harm caused by alcohol misuse.

Local Strategy to Address the Harm caused by Alcohol

Many people enjoy alcohol and drinking as a socially acceptable pastime, meeting up with friends and colleagues to relax. There is an increasing burden being borne by society due to the negative impact of alcohol misuse and it is a substantial and growing problem for our Borough, as it is in the rest of the North East and the UK. The overall aim of the strategy is to reduce the:

- negative impact alcohol has upon health and the quality of individuals' lives
- quantity and level of alcohol-

fuelled crime and anti social behaviour

- pressures which are placed upon health, social care and criminal justice services

Our three year alcohol strategy is based on research findings from a needs assessment completed in 2009, along with available best practice and feedback from consultation events also held in 2009 with service users, carers/families and wider stakeholders.

Social Marketing

Running alongside the Alcohol Strategy a social marketing campaign has been used to help us understand why people in our area misuse alcohol and what we need to do so that they can drink more responsibly. We also work closely with BALANCE the regional alcohol office to share best practice with our colleagues in the region.

Did you follow the sheep? In July 2009 we used a campaign aimed at parents to raise their awareness of their drinking habits and the influence it can have on their children.

To see the latest campaign material, become a friend of SSP on Facebook!



ThinkB4UDrink

2005 saw the launch of our award winning Think B4U Drink alcohol awareness campaign which aims to inform people about safe drinking levels. Since the campaign was last featured within this magazine in 2007, the Think B4U Drink team have worked together to cover many more current issues and relay important messages. We have developed campaigns for the European Cup, Christmas, Domestic Violence and Men at Work.



We work in schools linking with colleagues in the Teenage Pregnancy service to deliver Risk Taking Behaviour sessions.

Do you know the risks? Find out on www.knowtherisks.co.uk

Did you know?

When ASB and Neighbourhood Enforcement Officers are out on patrol testing strips are used to show alcohol presence in drinks young people may be carrying.

Did you know?

ThinkB4UDrink has been running for five years and evaluation shows 60% of those surveyed knew about the campaign!

In 2009 we renewed the alcohol prohibition signs in the town centre areas to comply with government guidance. In line with our policy to tackle theft of metals we replaced the signs with plastic ones.

If you have any issues or concerns around alcohol you can ring the Stockton 24/7 helpline on 0800 0522050 or contact the Drug and Alcohol Action Team at drugactionteam@stockton.gov.uk

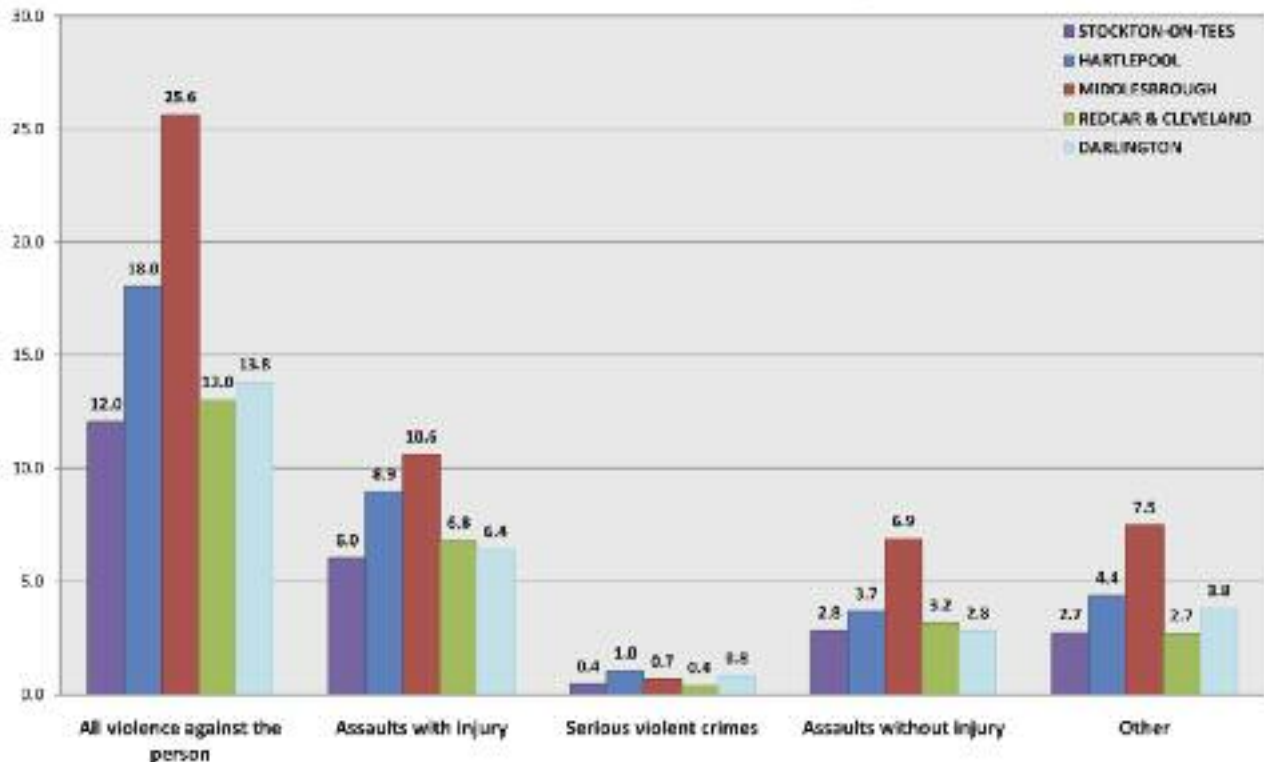


Cllr Steve Nelson Cabinet member for Housing and Community Safety with an NES Officer before an operation to confiscate alcohol from young people.

Reduce Violence

We compare favourably when viewed against our near neighbours. We have the lowest levels of violent crime in the Tees Valley, including serious violent crimes and assaults with injury as well as less serious offences.

Violent crime rates in the Tees Valley



In December 2009 Street Pastors came to Stockton providing a free service in the Town Centre on Fridays and Saturdays between 9pm and 3am. They patrol the area offering advice and support and offer water to those who may have had too much to drink and could be putting themselves at risk.



Steve Brock for the Street Pastors said: "Our partnership with SSP is important and we are committed to reducing anti social behaviour and violent crime within the night-time economy in Stockton town centre. This means that our volunteers patrol the High Street area in teams of three, offering help and support to anyone who may be vulnerable for whatever reason."

Fact

We know that compared to our MSCDRP rankings we have the lowest levels of Most Serious Violent Crime!

Fact

98% of clients supported by Harbour for domestic violence in our Borough are female.

We know that most violent crime in our Borough is low level violence and that most violent crime is related to the night time economy.

In May 2009 the first set of new data from North Tees University Hospital arrived, telling us where an alcohol related violent crime took place, whether the perpetrator was known to the victim, what type of weapon was used and the time of the incident amongst other things. This information is used alongside recorded crime data to help us to put resources into the areas with the most need.

We began using section 27 notices (Violence Reduction Act 2007) in January 2008. Since that time we have issued 934 notices. Issued by a

Did you know?

Over the last year 30% of all reported violent crime has been domestic violence.

police officer they require the person to leave a designated area for up to 48 hours, and if they return within that time they can be arrested. This means that 934 people who were behaving in a drunken manner were removed before they could commit a crime. Being proactive in this way nips potential problems in the bud and makes our Borough safer.

Pubwatch

Since 2007 we have obtained four more CRASBOs banning violent individuals from entering any Pubwatch member's premises. There are 170 members of Pubwatch covering Stockton, Yarm, Billingham and Thornaby.

Steve Paling, a licensee and Chair of a branch of Pub Watch said "We are very supportive of the police and their operations with the drugs dogs to try and eliminate drug use on our premises. Pubwatch works very closely with the police and other agencies to reduce crime and disorder to make pubs and clubs safer and welcoming for people to enjoy themselves."



Domestic Violence

Domestic violence sits within Violent Crime however because of the impact of this type of crime we produce a separate Domestic Violence Strategy.

We have a Domestic Violence Steering Group to over see support and enforcement and monitor our performance. The Domestic Violence Forum is well established and is chaired by the DV co-ordinator. This group looks at operational activity across the range of services that provide support to victims of domestic violence.

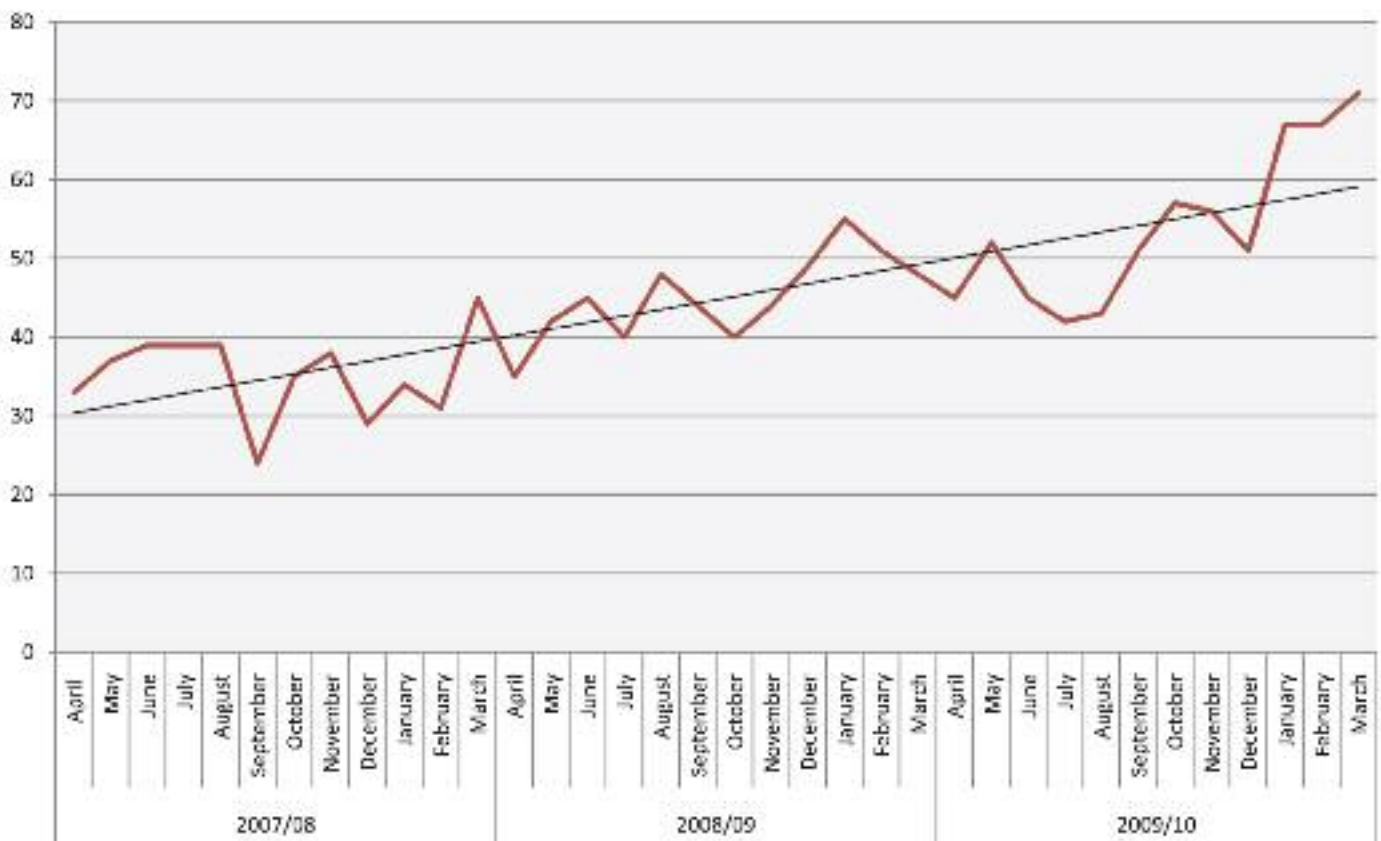
We've introduced a Domestic Violence Workforce Policy aimed at providing additional support to working people who are affected by domestic violence. In 2008 this policy was adopted by the Council as part of their Dignity at Work policy. A key part of the policy is that any perpetrators of domestic violence who are employed by the Council can be held to

account. The policy has been rolled out to other members of SSP including Safe in Tees Valley and the Police and is being looked at by the Probation service, PCT and Fire Service. We have also contacted a number of private businesses to encourage them to adopt the policy.

In 2007 we introduced a Multi Agency Risk Assessment Conference (MARAC) process to ensure that we are providing the right level of support to repeat victims of DV and those at a higher risk of harm.

In 2008 North Tees Women's Aid changed their name to Harbour. They continue to provide support services to victims of domestic violence and have a perpetrator programme for male offenders. The number of referrals to Harbour has increased over the last three years, as shown in the graph below.

Number of referrals to Harbour 2007-10



Fact

Since April 2008, 87 sessions for perpetrators have been held and 48% completed the programme.

Services provided by Harbour

Adult Outreach offers practical and emotional support for female victims of domestic violence at a venue of their choice.

The Freedom Programme is open to all women who wish to learn more about domestic violence. It is particularly good for women who have or are experiencing DV. The programme aims to increase participant's ability to take control of their lives, recognise the beliefs held by abusive men and increase their ability to protect their children.

A new element of this programme has just been launched to work with women victims who also have a drug problem.

Feed back from the Freedom programme:

It has made me see that it's not my fault and that I am not to blame

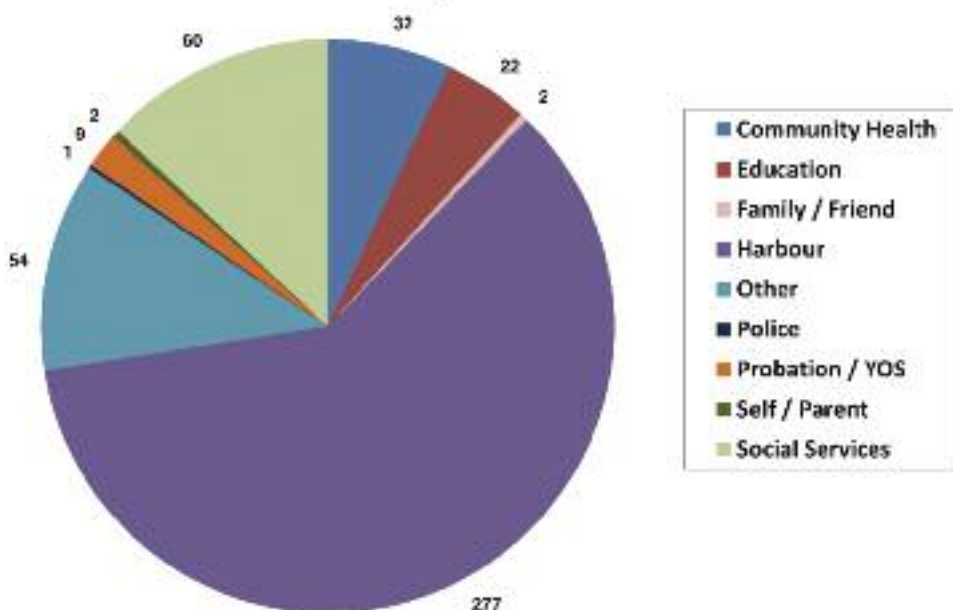
I don't feel so afraid or alone to face the future

Perpetrator Project challenges male perpetrators and helps them to:

- Understand what is non abusive behaviour in an intimate relationship
- Explore the different types of abuse used to control partners
- Identify a range of non abusive behaviours and how to apply them to their own relationships.

Children's Outreach supports children living in families affected by DV. Children can access one to one or group work sessions at a venue that is suitable for them. Referrals are received from various sources as shown in the chart below.

Children's outreach by referral source since 2007



Counselling Programme

Over the last three years Harbour's Sexual Violence Counselling programme has supported 336 individuals. The majority of these clients were female (83%) but the programme is available to both males and females who have been affected by sexual violence.

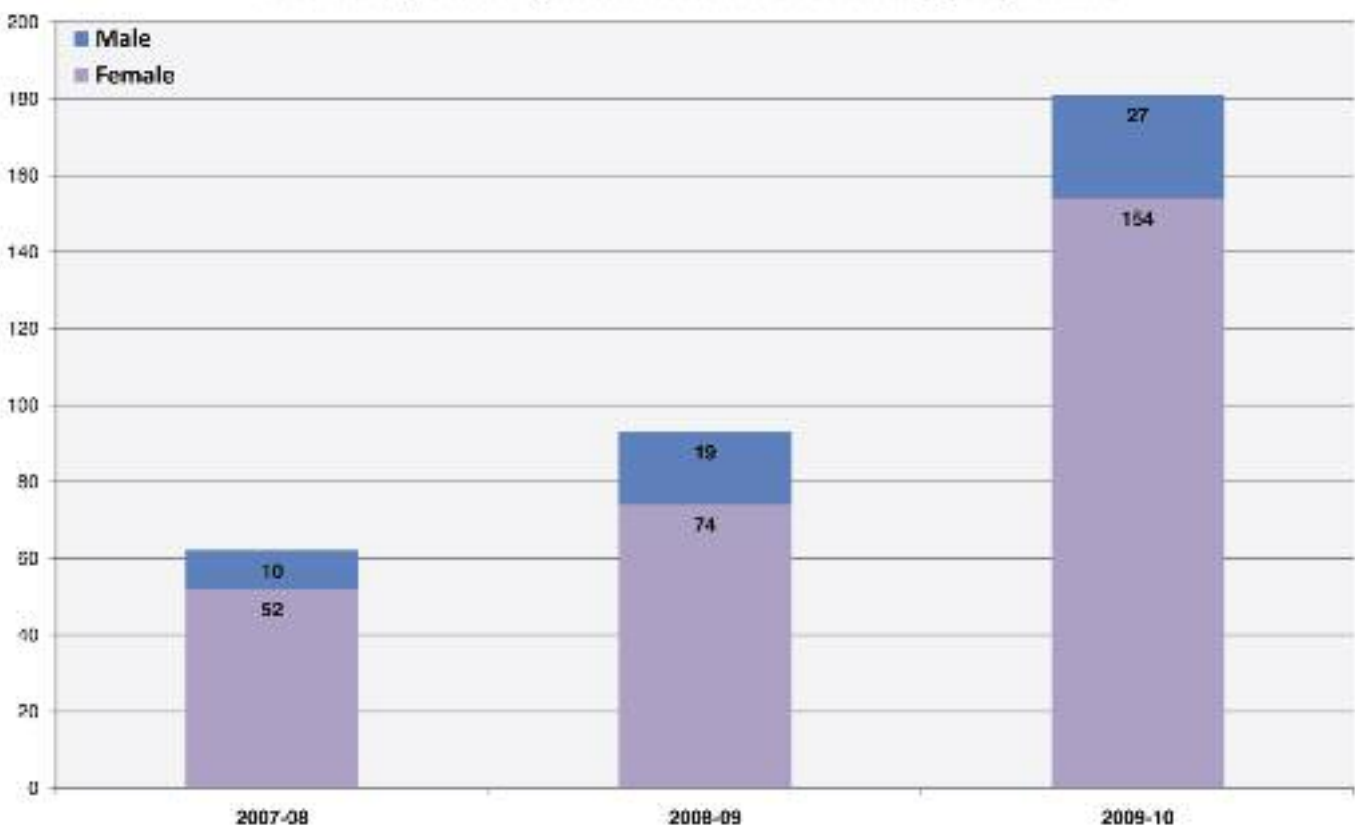
To contact **Harbour** call **(01429) 270110**.

To speak to someone in an emergency call the 24 hour line 0845 6027308.

We have a special hotline number for those who are affected by forced marriage, or having to remain in a marriage they want to end.

For Honour Based Violence call the 24 hour line 0800 5999365.

Clients supported by sexual violence counselling programme



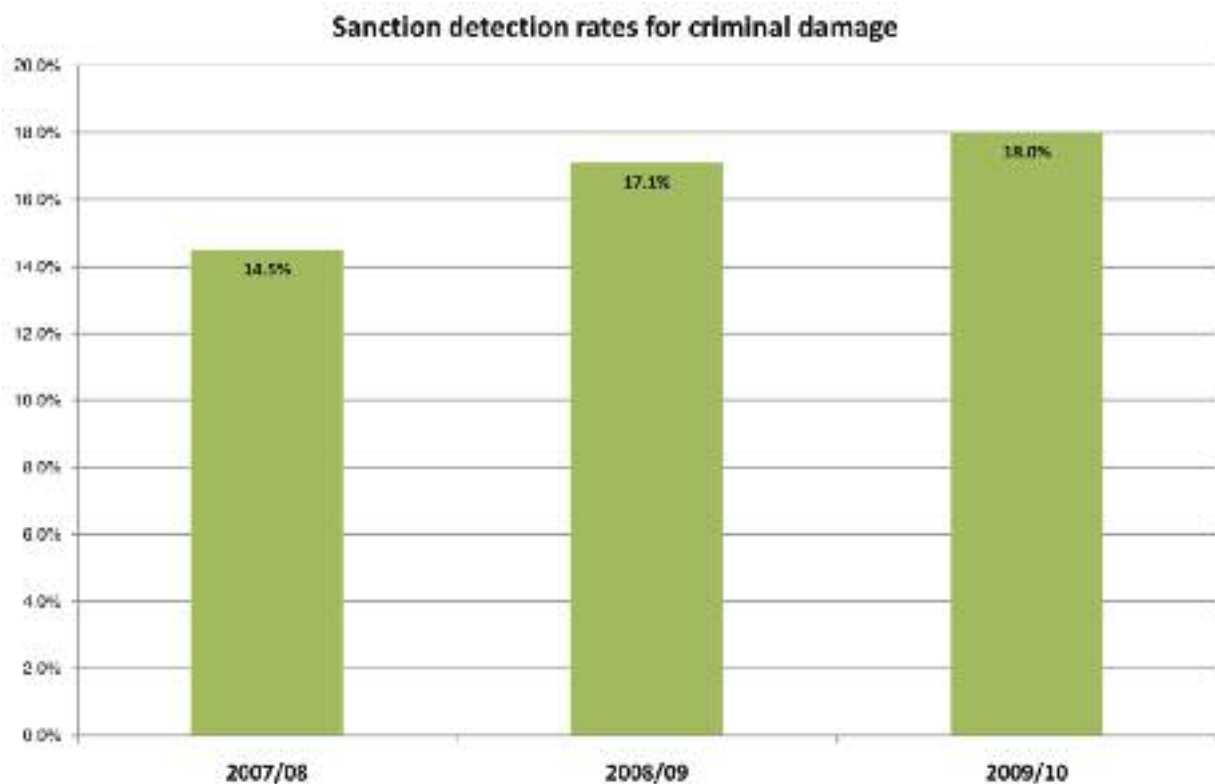
Fact

Domestic Violence doesn't only include physical abuse, it can also include emotional, sexual or financial abuse.

Reduce Criminal Damage

Detection of criminal damage is difficult because it is often a random act of vandalism committed without any witnesses. Over the last three years our detection rate has improved. Detected crimes are those that have been 'cleared up' by the police and they can be

divided into two categories: sanction detections (where the offender receives some formal sanction) and non-sanction detections (where no further action is taken). This chart shows sanction detections have risen over the last three years.



Since 2006 there has been a multi-agency group set up to tackle criminal damage in the Borough. This involves:

- Targeting hot spot areas for criminal damage with increased visible presence from uniformed officers.
- Educating young people in schools to recognise the consequences of criminal damage.
- Identification of repeat victims of criminal damage so we can look into taking further action.
- Working with RSL's to ensure effective processes are in place for reporting and dealing with criminal damage.
- Rapid removal of graffiti and materials that could be used to cause damage.

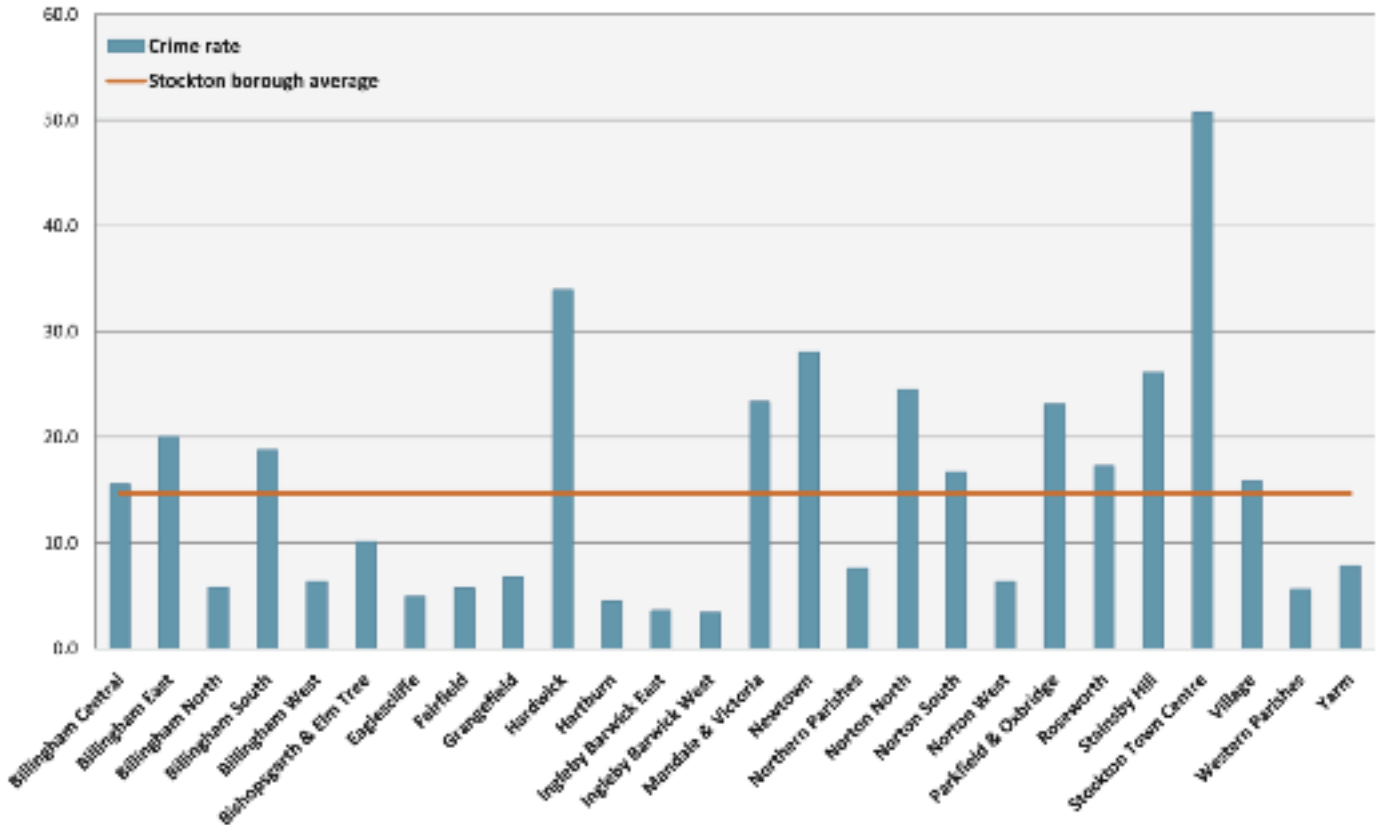
Did you know?

You can receive a Fixed Penalty Notice of up to £80 for criminal damage.

We know we compare favourably with our neighbours but some wards suffer higher levels of criminal damage. Typically those wards that have high levels of anti social behaviour as well

as deprivation have high levels of criminal damage. This chart shows the rate of criminal damage offences per 1,000 population by ward.

Criminal Damage rates by ward 2009/10



In September 2009 for the first time the Community Safety Team met with every primary school in the Borough at Crucial Crew. We used a criminal damage scenario based on a 'Big Brother' theme to engage and educate all year 6 pupils on the consequences of criminal damage.

The ASB Team takes criminal damage very seriously and has made examples of youths after they used graffiti on a spotless white wall. They gave them three options of punishment. With encouragement from parents they chose to clean the area themselves on a busy Friday night, using a graffiti removal kit supplied by the ASB Team.

One of the youths said "This is the hardest work I've ever done; it's just not worth writing my name on that wall, it looks scruffy anyway!"



Diverting Young People from Offending

Diverting young people from offending is a key theme throughout all of our partnership work and evidence of this is used throughout this magazine. Here are some more examples of activities that are used for this approach.

ROACH

The Roach project is an innovative, interesting and fun project that develops young people's knowledge of how to report crime and anti-social behaviour to Crimestoppers and other leading agencies. The project is based on 10 cockroach characters, all depicting different acts of crime and anti social behaviour. In 2009/10 we visited 16 primary and five secondary schools targeting every child within these schools in their last year of primary and first year of secondary.

For more information please contact Claire Sills (01642) 527616 or e-mail communitysafetyteam@Stockton.gov.uk



Roach lesson, Y6 St Bede's Primary



Quote from Maisie, aged 12, Egglescliffe School. "After this lesson I feel so much more is being done to keep Stockton-on-Tees safe. I know exactly what I have to do to report someone doing something out of turn."

Quote from Steve Smith, Science Teacher, Egglescliffe School. "The Crimestoppers presentation is an effective vehicle for promoting a sense of responsibility and community spirit in all students."

Youth Crime Action Plan (YCAP)

In 2009 we received funding from the Government to set up a number of projects to reduce the risk of young people drifting into offending. We used this funding to:

- Establish a Family Intervention Project (FIP), working with families who are experiencing problems that could result in them losing their home.
- Establish Street Based Teams to promote positive activities to young people especially on Friday and Saturday evenings.
- Set up After School Patrols to tackle anti social behaviour at school closing times.
- Delivered reparation carried out in leisure time to repair the harm caused by offending.
- Used Operation Stay Safe to protect vulnerable children/young people whose behaviour or whereabouts places them at risk of immediate significant harm. A police officer will take the young person to a place of safety until their parent/guardian can come and pick them up.

Life Intervention Fire Education (LIFE)

SSP has funded three LIFE programmes during the last two years delivered by the Fire Service. It has evolved over this period and now runs for eight days. Each programme had eight young people in attendance and was designed to challenge and motivate young people to think about their behaviour and learn new skills from Fire Officers, including:

- General First Aid
- Harm and risk of setting fires
- A taste of the practical activities a Fire Officer undertakes
- Teamwork and communication
- Building self confidence

Daniel aged 16 said: "When I completed the LIFE course it gave me a different aspect on life, I used to set fires all the time. Now I've learnt about fires and the dangers of setting them I don't do it anymore. The course was fun, but you get to learn and improve your education. I enjoyed it so much I am now a Fire Cadet!"



Emerging Issues

What the data tells us about Emerging Issues

Partnership Strategic Assessment

In January 2010 we published our third Partnership Strategic Assessment (PSA). This document looks at how we are performing in relation to our targets alongside in-depth analysis into the key crime and disorder issues in the Borough over the last year. This is an opportunity for us to analyse in detail the issues residents have highlighted to us to get a better understanding of what is happening in the Borough. From this we can identify how to respond to these issues and how to prevent further crime and disorder in the coming year. We use data from various partners of SSP including the Police, Council, Fire Service, Probation, Youth Offending Service and North Tees University Hospital to inform the PSA.

The PSA has three key chapters of victim, offender and location, which help us to identify exactly what the issues are, who they are affecting and where they are occurring.



The Problem Analysis Triangle (PAT)

Did you know?

Cash, wallets and mobile phones are the most commonly stolen items – so keep them out of sight or in a closed bag.

We found that victims of crime differ by crime type. Young males are most vulnerable to violent crime and most domestic violence victims are female. We know we have very low levels of repeat victimisation and the most vulnerable items for theft are cash, mobile phones, garden equipment and bicycles. We also confirmed that the majority of offenders are male and many commit crime to fund their substance misuse. In the location section we found areas higher in crime are also high for anti social behaviour and tend to be the most deprived areas of the Borough with violence, criminal damage, vehicle crime and anti social behaviour peaking on weekend evenings.

Did you know?

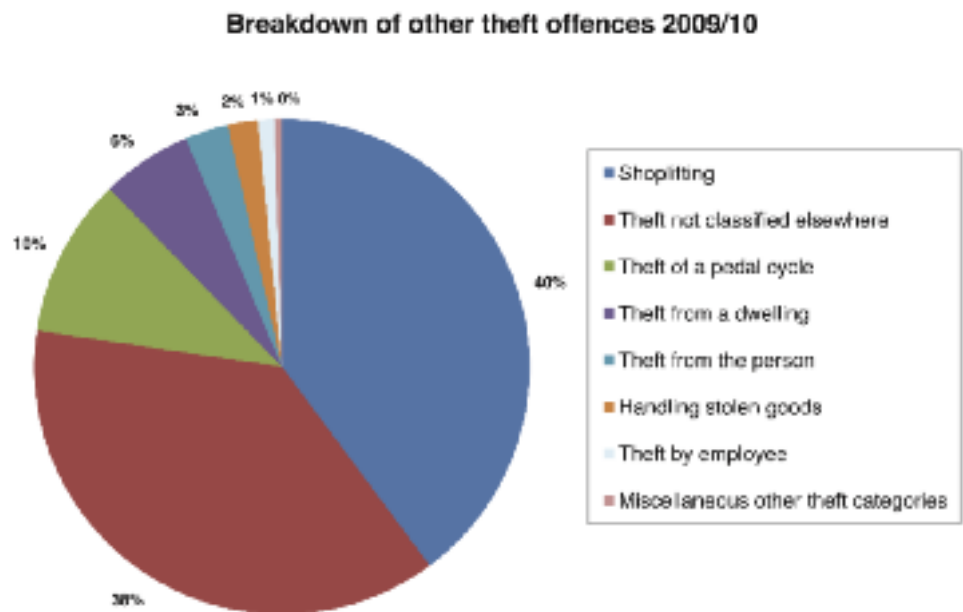
The Partnership Strategic Assessment found that only 3 victims of robbery were elderly (65+) and 43% were young males who typically had mobile phones or wallets stolen.

Emerging Issues

For the sixth priority SSP chose to have a category called Emerging Issues. This allows us to be flexible and to identify any issues of concern that come through monthly Tasking and Coordinating meetings, the yearly Partnership Strategic Assessment and public consultation. Since 2008 our focus has remained on Other Theft however the types of crime that make up this crime type have fluctuated in priority

Other Theft

When we looked at the Home Office definition of other theft we found only certain parts of it were a problem for us. For example theft from the person is part of this category but it is low in our Borough. We also know during the summer months theft of garden furniture usually increases. For us the main areas of concern are theft of metals and shoplifting so we have concentrated our efforts on these two crime types.



Shoplifting

This crime type has fluctuated over the last three years, 37% of all shoplifting occurs in Stockton Town Centre and we know some of our PPOs commit this crime type.

Compared with other areas we have relatively low levels of shoplifting. We are 8th best in our MSCDRP rankings and below the group average.

Theft of metals

Removal of lead flashing and stolen railway line couplings are some of the types of theft included in this category. We know that this is the crime of choice for some of our most prolific criminals. Over the last two years we have worked with scrap dealers and they are enforcing identity procedures with anyone attending with scrap. There is now a policy of not paying cash to people who turn up at the scrap yard. We know wheelie bins are also used to transport scrap so we have a proactive policy of stopping anyone seen moving a bin around the Borough. We have replaced metal signs with plastic ones and replaced manhole covers with non metal covers where this is possible.

Fact

As part of their ASBO people have been banned from entering named shopping areas in the Borough, if they do go there they can be arrested for breach of their ASBO.

Other Emerging Issues

Providing Reassurance

Government policy has placed a major emphasis on the confidence agenda assessing the public's confidence in local agencies through a bi-annual Place Survey. This is not quite the same thing as providing reassurance and it is the latter that SSP have focussed on in the last two years. Providing reassurance is focussed on the needs of the public whereas improving confidence is about agencies telling the public what they have done to help them. However this approach can lead to a reduction in reassurance so we have focussed our efforts into an area that has a disproportionate level of fear of crime against actual crime.

Also in April 2010 the ASB Team employed a dedicated Victim and Witness Support Officer whose role is to maintain regular contact with victims of anti social behaviour, working closely with the Police Public Confidence unit who call victims of crime and anti social behaviour reported to the police.

Some of our residents are worried their bag may be snatched. Whilst levels of robbery and theft from the person are very low in our Borough we can provide reassurance with a set of purse bells to anyone who contacts the community safety team. The bells will alert the owner of the bag if someone else is interfering with it.

Safe at Home

April 2010 saw the 1,000th victim benefit from our Safe at Home scheme. This scheme provides additional security measures to those who have been a victim of a relevant crime, who are vulnerable or may become a victim of a crime such as house burglary or domestic violence. The scheme is based on a referral service where the council's community safety

team along with the police work closely with support services such as Victim Support, Harbour and Registered Social Landlords to identify those in need of help.



As part of the Safe at Home scheme the team worked with the Fire Service in the winters of 2008 and 2009 and provided warm packs and hampers to vulnerable people in our Borough.

PREVENT

There is a national drive to tackle terrorism and prevent violent extremism known as PREVENT. Whilst evidence of this type of activity is low in our Borough we have developed a monitoring group to help us to identify any early concerns. We have also produced a DVD for operational staff so that they can be alert to things such as empty chemical containers in a bin which could be signs of terrorist activity.

Illicit Tobacco

Illicit tobacco is cheap but it is fuelled by organised crime, It allows people to:

- Keep smoking
- Smoke more
- Smoke earlier

If you would like more information contact FRESH 0191 387 2259 or www.get-some-answers.co.uk

Fact

In April 2010 the 1,000th victim received our help and benefited from our Safe at Home scheme.

Making an Informed Choice

The table below provides a summary of some crime types. We would like you to complete the survey on the next page to tell us what you think we should treat as a priority and what you think we should not prioritise with the resources that we have available to us.

<p>Alcohol Related Crime and ASB Alcohol misuse is most often linked to violent crime, ASB and criminal damage.</p>	<p>Hate Crime Includes any crime committed against someone because of their race, sexuality, religion or disabilities.</p>
<p>Anti Social Behaviour Behaviour that causes people and communities distress, can include many different things. We have given you a number of ASB options on the survey form so that you can tell us what is most important to you.</p>	<p>Illicit Tobacco Encourages young people to smoke and smokers to smoke more and for longer. This illegal trade is fuelled by organised crime and sales at 'Tab Houses' can create anti social behaviour for neighbours.</p>
<p>Arson/Deliberate Fires This is where someone deliberately sets fire to property or land which can cause injury and/or death as well as damage to property.</p>	<p>Preventing Violent Extremism Reducing the risk to communities from terrorism.</p>
<p>Business/Retail Crime Shoplifting, petrol make offs and other business crime affect jobs and push up prices.</p>	<p>Providing Reassurance Providing accurate information about offending to residents without raising their fear of crime.</p>
<p>Criminal Damage Covers all sorts of deliberate damage to public and private property.</p>	<p>Reducing Reoffending Working intensely with the small numbers of criminals who repeatedly commit crime.</p>
<p>Cycling on Pavements Choose this if you think we should focus our efforts on this.</p>	<p>Road Safety/Speeding This can include driving dangerously as well as exceeding the speed limit.</p>
<p>Diverting Young People from Offending Choose this if you think we should continue with our efforts to divert young people from entering the Criminal Justice System.</p>	<p>Robbery Robbery is a theft where violence has been used, this crime is very low in our Borough.</p>
<p>Domestic Violence This is violence from someone that you have been or are in a relationship with.</p>	<p>Vehicle Crime Includes taking a vehicle, taking something from a vehicle or interfering with a vehicle.</p>
<p>Drug Related Offending Choose this if you think that we need to continue our efforts to break the link between the misuse of drugs and crime/ASB.</p>	<p>Violent Crime Includes a range of crimes where the assailant is someone not in a relationship with the victim. In Stockton the most common is Actual Bodily Harm followed by Assault without Injury.</p>
<p>Dwelling Burglary Having your home broken into and your property stolen, this includes a garage that is attached to your home but not a shed.</p>	<p>Victim/Witness Support Providing extra support for those who have been a victim of crime. This can include increasing security for victims of property crime and/or telephone and one to one support to help victims and witnesses affected by a crime or anti social behaviour</p>

If you complete the survey on the next page, you may win a prize!

Don't delay. Have Your Say! Return by 31st October 2010

You could win a TV ad £100 shopping vouchers by completing our survey but don't forget to add your contact details. Good luck!

If you would like some help with this form please contact Claire Sills on (01642) 527616

Name and address (include postcode)

Ward/ward councillor (if known)

For monitoring purposes are you? Male Female

Age range: Under 16 16 – 24 25 – 29 30 – 34 35 – 44
45 – 54 55-59 60-64 65 – 75 Over 75

Ethnic origin: White Mixed Race Black Chinese Asian

Other please state

Do you consider yourself to have a disability? Yes No

Please tell us what you think Should and Should Not be priorities for the Safer Stockton Partnership. Please put a ✓ in the <input type="checkbox"/>					
Pick up to SIX in each column so you will tick up to 24 boxes.					
Please note if you tick all boxes your form will not be used.					
	Should	Should Not		Should	Should Not
Alcohol related crime/ASB			Abandoned cars		
Anti Social Behaviour			Alcohol misuse		
Arson/deliberate fires			Begging		
Business/retail crime			Dog fouling		
Criminal Damage			Fly tipping		
Cycling on pavements			Graffiti		
Diverting young people from offending			Kerb crawling		
Domestic Violence			Littering / dumping rubbish		
Drug related offending			Noise nuisance		
Dwelling burglary			People being drunk and rowdy		
Hate crime			Poor parental responsibility		
Illicit Tobacco			Prostitution		
Preventing Violent Extremism			Street drinking		
Providing reassurance			Threats / verbal abuse		
Reducing re-offending			Throwing missiles		
Road safety / speeding			Trespassing		
Robbery			Vandalism		
Vehicle crime			Other:		
Violent Crime					
Victim / Witness Support					
Other:					

Have you read the Crime and Disorder magazine? Yes No

After reading this magazine please tell us do you feel:

More safe Less safe No different

Do you feel well informed about what SSP are doing to tackle crime and anti social behaviour?

Yes No

Any other comments?



**Community Safety Team
Stockton-on-Tees Borough Council
Stockton Police Station
The Square
STOCKTON-ON-TEES
TS18 1TZ**